

**OLYMPUS**

**OM-D**

REDUCED TO PERFECTION

# LEADING INNOVATION

OM-D LINE-UP 2015/2016









"If a new kind of camera inspires increasing satisfaction as the photographer gets to know it better, it will gain a permanent place in his affections as an indispensable photographic tool."

**YOSHIHISA MAITANI**  
Designer of the original OM

1933–2009

## Heritage in groundbreaking innovations:

The year 1973 saw the first OM camera hit the market: the OM-1. It earned wide acclaim as the world's smallest, lightest 35mm single-lens reflex camera.

In the run up to the camera's introduction to the market, OLYMPUS had improved and developed a wide range of technologies and features in preparation for production of the OM-1. These included rust-prevention technology for the steel materials used to reduce weight, pentaprism processing technology, and heat treatment and surface processing technologies to maximise durability.

At the time of its launch in 1973, the OM-1 created such an impact that subsequent models soon followed. By 1986, eight additional OM cameras had set standards in the photography world. World-firsts and continued enhancements – such as through-the-lens (TTL) direct

metering, increased shutter speed, electronic focus detection and more – were just a few of the technological advancements that OLYMPUS OM cameras delivered.

Today, OLYMPUS has revived the stylish look and feel of the original OM-1 models to now offer a range of cutting-edge digital cameras: the OM-D E-M1, E-M5 Mark II, E-M10 Mark II and E-M10. They far exceed their reputation, raising the bar of system camera photography with smart technologies and innovative features, including the world's most powerful image stabilisation\* in the OM-D E-M5 Mark II and a compact design that photographers have come to expect from OLYMPUS.



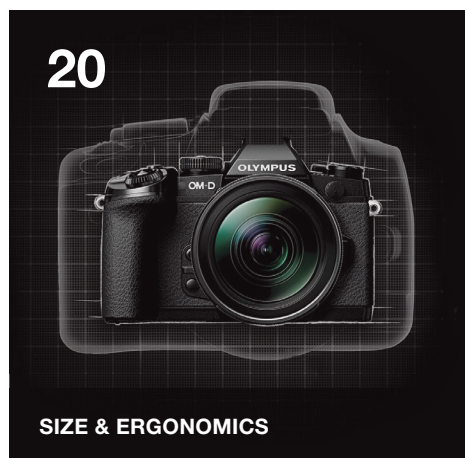
**Over the years, the OM has been the camera of choice for capturing style icons.**

**A breakthrough in design and innovative features: the highly coveted OM-1.**



\*CIPA standard as of June 2015.

# CONTENTS



# A beauty to hold and behold: The OM-D line-up is the epitome of perfection in design and workmanship.

Every detail of the OM-D models has been meticulously manufactured to provide a user-friendly, ergonomic camera that is also a true eyecatcher. The logical placement of the haptic metal dials and intuitive control buttons on the outside ultimately underscore the innovative technologies on the inside – with the result being outstanding imaging quality.

Appealing as an everyday tool, all the cameras in the OM-D line-up have a compact body yet feature a genuine front-and-back grip that fits perfectly in the hand for a secure hold. Even the large Electronic Viewfinder accommodates the shape of the human face to make for comfortable operation. Whether shooting in rainy weather or in dusty locations, the high-end OM-D models' tight gasket rings provide maximum protection.

As if that weren't enough, the OM-D line-up exudes a style and elegance hardly seen with comparable camera brands. The high-quality materials used and their clear lines give the impression of both strength and sharpness. Paired with the manual focus Control Ring, the OM-D design exudes professionalism at every level of photography.

### FACTS

- Ideally positioned metal dials
- Intuitive buttons and knobs
- Ergonomic, comfortable grip
- Large Electronic Viewfinder
- Manual focus Control Ring
- Magnesium alloy body\*
- Stylish textured elements

### User-friendly metal dials

E-M5 Mark II



\*E-M1 and E-M5 Mark II.

Features vary from model to model – visit the OLYMPUS website for the latest firmware.  
For specifications, please turn to page 29 or visit us online.



## High-quality materials make for a high-grade build.

To perfectly complement the carefully engineered technology inside, the OM-D line-up dons a cutting-edge magnesium alloy body, a robust material also found on high-end D-SLR cameras. Despite the metal housing, the camera models remain discreet and lightweight enough to take on every photo assignment. The black textured elements provide the ideal contrast, lending the cameras a high-class form.

### Comfortable textured grip

E-M5 Mark II with M.ZUIKO DIGITAL ED  
12-50mm 1:3.5-6.3 EZ lens



Magnesium alloy body

# The art is in the details: Sculpted to perfection, OM-D cameras are a masterpiece down to the very last detail.

Like sculptors of fine art, the engineers and designers at OLYMPUS have taken great care to make the OM-D line-up the epitome of ergonomic handling and ease of use. The metal parts, solid texture and gloss of the ideally positioned metallic dials and the perfectly proportioned buttons all come together to provide an overall

aesthetic appearance while making OM-D cameras a pleasure to use.

Even the fine grooves on the dials and the manual Control Ring as well as the distance between the controls, Electronic Viewfinder, hot shoe and built-in flash have been carefully considered for optimal ease-of-use operation on any assignment.



Features vary from model to model.  
For specifications, please turn to page 29 or visit us online.









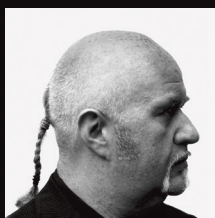
"I love being a strobist.  
The E-M1 has re-fired  
my creativity."

Over 25 years in photography, Damian McGillicuddy has gained a fantastic level of knowledge and experience, earning him, among other things, five UK Master Photographer of the Year Awards, the only photographer to do so. By expertly manipulating light and using flash in creative ways, he captures dynamic portraits and poses, making him one of the world's ultimate strobists.

"I'm getting rather hooked on this lo-fi style of photography – it's raw, it's fresh, it's honest art. I love the artistry that the E-M1 is capable of. Being able to manipulate the plane of focus is very, very liberating and you can create some great looks. The E-M1 has all the tech I need to get the edgy, extraordinary shots that also enhance and flatter the subject, just like I want."

### DAMIAN MCGILlicuddy

Fashion and People Photographer  
Chester, UK



[damianmcgillicuddy.com](http://damianmcgillicuddy.com)







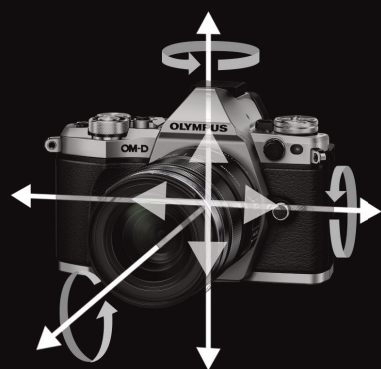
PHOTOGRAPHER DAMIAN MCGILLICUDDY CAMERA E-M1  
LENS M.ZUIKO DIGITAL 17MM 1:1.8 EXPOSURE 1/15s APERTURE 3.0 ISO 200



## THE OM-D LINE-UP'S ADVANCED TECHNOLOGIES PERFORM TO THE HIGHEST LEVEL.



### 5-Axis Image Stabilisation: World's most powerful 5-Axis IS\* ensures full sharpness.



OLYMPUS 5-Axis Image Stabilisation (IS) is the culmination of the high-end OM-D experience and is ideal for handheld, low-light shooting conditions with a long exposure time, for instance when shooting indoors or at night. Thanks to the use of electricity driven through a Voice Coil Mechanism (VCM), a magnetic field is created which enables the sensor to float inside the camera. The result is full compensation for every kind of jolt or camera shake – five in total: vertical angle rotation, horizontal angle rotation, vertical shift, horizontal shift and rolling camera movement. This enables the 5-Axis IS to accurately prevent blurring and deliver amazingly clear, sharp images.

*Features vary from model to model – visit the OLYMPUS website for the latest firmware.  
For specifications, please turn to page 29 or visit us online.*

Photo by Paul Emmings

# Advanced Electronic Viewfinder: Rivals even D-SLR cameras.



For gaining creative control over the scene or subject to be captured, all OM-D models feature an advanced Electronic Viewfinder (EVF) that makes the bulky pentaprisms found on D-SLR cameras redundant. Easy to see, bright and clear, large image, super-fast with high-resolution and short lag time. It's everything a photographer needs from an EVF and more under the motto "What you see is what you get".

With the EVF's built-in Creative Control, photographers can alter the aspect ratio, manipulate colours and light, change focus and more without ever taking their eye off the subject – before they even press the shutter button. In other words, the EVF is capable of everything an optical viewfinder (OVF) is not.

## FACTS

Approx. 100% field of view

Up to 2.36M dots resolution

Down to 7ms lag time in High-speed

Up to 1.3x larger than an average  
D-SLR EVF

## 40M High Res Shot: Amazing high-resolution shots thanks to ultra-precise VCM.



A world first\*\*: the new 40M High Res Shot from OLYMPUS generates super high-quality images, rich in detail. A special component of this highly advanced technology is the 5-Axis IS mechanism. It slightly shifts the sensor left and right, by precise half-pixel increments, to sequentially capture eight images. These are then combined in the camera to create a single shot of an amazing 40 megapixels – or 63.7 megapixels in the RAW file. 40M High Res Shot on the E-M5 Mark II achieves astonishing resolution comparable with much more bulky high-end D-SLRs.

*\*CIPA standard as of June 2015.*

*\*\*Among D-SLR and compact system cameras.*



# OM-D Movie: Crystal-clear scenes with built-in image stabilisation.

The world's most powerful 5-Axis Image Stabilisation (IS) system\* from OLYMPUS allows for steady, freestyle filming without the need for an external camera stabiliser. So any videographer can closely follow the action, get right up to the subject and film from fascinating angles while walking and record clear, sharp movies at the same time. OM-D Movie also leverages multi frame rate capture of up to 60fps, enabling cinema-like, slow-motion and time-lapse style films for even greater creative freedom with every take.



**Full HD**

## FACTS

- Record in variable frame rates of 60p, 50p, 30p, 25p, or 24p
- High bit rate recording
- All-intra compatible
- Clean HDMI output
- Microphone input jack
- Headphone jack available with the optional grip

24 <sub>fps</sub> 25 <sub>fps</sub> 30 <sub>fps</sub> 50 <sub>fps</sub> **up to 60 <sub>fps</sub>**

\*CIPA standard as of June 2015.

Features vary from model to model – visit the OLYMPUS website for the latest firmware.  
For specifications, please turn to page 29 or visit us online.



**PHOTOGRAPHER** DIEGO GARÍN MARTÍN  
**LENS** M.ZUIKO DIGITAL ED 12-40MM 1:2.8

**CAMERA** E-M5 MARK II **FOCAL LENGTH** 36MM  
**EXPOSURE** 1/1000s **APERTURE** 8.0 **ISO** 400



**DIEGO GARÍN MARTÍN**

Landscape and Nature Photographer  
Asturias, Spain



[diegogm.es](http://diegogm.es)

**“The OM-D lets my photographs flow freely.”**

Diego Garín Martín, a Spain-based photographer, first started using OLYMPUS cameras in 2009, after which he discovered his love for coastal landscapes. He expresses his creativity through scenery photography and projects his vision to other fields too: architecture, portraits, culinary, macro or night photography. Diego particularly uses the OM-D's long exposures and Live Time to achieve a natural-looking effect and not be restricted by a total control of light.

“Thanks to the new OLYMPUS OM-D E-M5 Mark II, I have the clarity, ergonomics and size I need to capture the moment. Additionally, with its powerful 5-Axis Image Stabilisation, I can shoot without a tripod in most cases.”



## Dustproof, splashproof, freezeproof: Made for virtually any weather and any location.

Other camera brands may claim to be ready for all-terrain shooting – OM-D cameras truly are. Thanks to the practically impenetrable magnesium alloy body with up to 60 gasket rings for maximum protection, the high-end OM-D cameras are ideal for photography in damp habitats or sandy situations. The OM-D E-M1 and OM-D E-M5 Mark II go a step further, enabling operation in sub-zero temperatures right down to -10 °C. This extreme-condition compatibility makes these cameras ideal for any number of photo assignments around the world, at any time of the year, ensuring worry-free capture of spectacular moments.



*Features vary from model to model – visit the OLYMPUS website for the latest firmware.  
For specifications, please turn to page 29 or visit us online.*





Photo by Diego Garín Martín

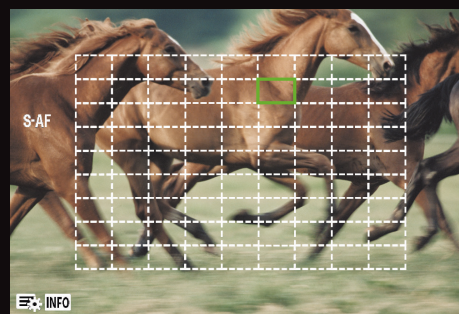
## AMAZING AUTOFOCUS: DUAL FAST AF and world's shortest shooting time lag\*.

DUAL FAST AF delivers speed and accuracy with all Micro Four Thirds and Four Thirds lenses. It utilises both on-chip Phase Detection AF and Contrast AF. As soon as the high-end OM-D camera has detected which lens is being used, it automatically switches to the optimum autofocus system.

The excellent tracking performance of the OLYMPUS autofocus system also makes it perfect for shooting dynamic subjects. High-speed Sequential Shooting of up to 9fps

with continuous autofocus on the high-end OM-D perfectly exploits DUAL FAST AF to expertly capture bursts of sharp photos of moving subjects, such as galloping horses and powerful waves breaking.

The OM-D also shows off with the world's shortest shooting time lag thanks to FAST AF – always ensuring the perfect shot.



### FACTS

Up to 81 focus points

Up to 9fps with continuous autofocus

Time lag down to 44ms

\*As of February 2015 on interchangeable lens cameras. CIPA compliant. When M.ZUIKO DIGITAL ED 12-40mm 1:2.8 PRO, focal length of 40mm (35mm equivalent: 80mm), is used. According to OLYMPUS research.



## TECHNOLOGY

“The E-M10 Mark II is the perfect companion for my London photography.”

Nicholas “Nico” Goodden is the founder of the “Street Photography London” collective. He is an award-winning, professional London street/urban photographer and also produces cinemagraphs for small businesses as well as international corporations. In 2014, he was included in the global list of the Top 100 Most Socially Influential Photographers and in 2015, the 20 Most Influential Street Photographers. What’s more, Nico is also always on the lookout for the best foodie spots in the capital, as he’s a trained chef too.

“I felt the vintage filter on the E-M10 Mark II was perfectly suited for this scene. Richard Hards (Head chef for Bob’s Lobster) is a stylish character who had to be captured in a stylish and unique way. The E-M10 Mark II is beautifully designed, produces high-quality photos and fits a wide range of lenses. As it’s fairly small, it allows me to shoot without being noticed. It also helps me produce better cinemagraphs and videos with its image stabilisation and ability to shoot 60fps at 1080p.”

### NICHOLAS GOODDEN

Urban Photographer  
London, UK



[nicholasgooddenphotography.co.uk](http://nicholasgooddenphotography.co.uk)





**PHOTOGRAPHER** NICOLAS GOODDEN **CAMERA** E-M10 MARK II  
**LENS** M.ZUIKO DIGITAL 17MM 1:1.8 **EXPOSURE** 1/1250s **APERTURE** 4.5 **ISO** 100





# Reduced to perfection: The slim OM-D camera size and comfortable ergonomics deliver photographic benefits and convenience beyond compare.

For many years, bigger was always thought to be better. Photographers of all levels considered large-sized SLR or D-SLR cameras to be the better choice. Today, times have changed. Professionals have come to appreciate a slim, lightweight size in a camera that provides uncompromising imaging quality and the entire range of essential photographic features. A camera line-up that is reduced to perfection in every way. The OM-D.

### Greater freedom of movement

For professional photo journalists and enthusiasts alike, and even newcomers to high-end digital photography, photo assignments can lead to all corners of the earth. Capturing stunning, expressive images that tell a story or make a lasting impression is the aim of any photographer, anywhere in the world.

Regardless of the photographer's style – from authentic, spontaneous street photography to staged indoor shots or long-planned and executed landscape images – the OLYMPUS OM-D cameras are slim enough to take anywhere while delivering outstanding image quality. For instance, at a width of a mere 93.5mm and a light weight of just 497g (including the battery and memory card), the OM-D E-M1 is more compact than the average conventional D-SLR – making it and the other OM-D models ideal for

capturing truly authentic moments. Greater freedom of movement is also ensured with the touch-screen LCD monitor, now with new vari-angle capability on the OM-D E-M5 Mark II. It enables photographers to shoot comfortably from extra-high up or extra-low down, capturing extraordinary perspectives guaranteed to take viewers' breath away.

### Slim in size, big on performance

Despite their compact build, the cameras in the OM-D line-up are packed with high technology for any style of photography, indoors or out. The engineering excellence that has gone into the OM-D cameras has resulted in outstanding image reproduction from a slim-sized camera that is ready to go on any assignment around the world.

The cameras in the OM-D line-up are also compatible with one of the largest ranges of lenses on the market, making possible telephoto, wide-angle, fisheye, macro shots and more from just a single camera that fits in the palm of a hand. *Read more about OLYMPUS optical performance on page 26.*

### Faster, easier operation

Because ergonomic handling is essential for capturing spur-of-the-moment photos, the OM-D line-up has been intelligently engineered to conform to intuitive operation. Every

dial and every button, the Electronic Viewfinder, grip and Control Ring, to name just a few features, have been placed such that any photographer can capture images in their own photography style without fiddling around with the camera and losing valuable time.

**Even the biggest OM-D camera is significantly more compact than the average D-SLR camera – ensuring easy portability and discreet shooting.**

E-M5 Mark II



E-M1



E-M1



Features vary from model to model – visit the OLYMPUS website for the latest firmware. For specifications, please turn to page 29 or visit us online.

**OM-D E-M10 Mark II**



**Average D-SLR camera**

58%

**smaller\***

48%

**lighter\***

*\*As of June 2015.*



## SIZE & ERGONOMICS

“With this camera,  
I am invisible and people  
stop questioning my  
presence.”

A published author and known speaker on the subject of street photography, Thomas Leuthard captures whatever triggers his curiosity – using his OM-D E-M10. He finds reality much more interesting, preferring to hit the streets than set up studio scenes, and leaving the flash at home. To him, a discreet camera is essential for capturing authentic moments that tell a story and pull in the observer.

“After I saw the first photo of the OM-D, it was clear to me that I had to buy this camera. It is not only the perfect size for street photography, but also has the style, the swivel display, the fast AF and, of course, the image quality. I can walk down the street looking like a tourist and take my shots in ‘stealth’ mode, as I don’t have to look through the viewfinder. I can even place the camera flat on the ground and still be able to take a photo with the screen without doing any special acrobatics.”

### THOMAS LEUTHARD

Street Photography Enthusiast  
Zug, Switzerland



[thomasleuthard.com](http://thomasleuthard.com)





PHOTOGRAPHER THOMAS LEUTHARD    CAMERA E-M10    FOCAL LENGTH 17MM  
LENS M.ZUIKO DIGITAL ED 17mm 1:1.8    EXPOSURE 1/400s    APERTURE 3.2    ISO 200





## VERSATILITY

# OM-D: THE SYSTEM CAMERA WITH THE WORLD'S MOST ADVANCED LENS LINE-UP.

Many years ago, professionals discovered the advantages of the optical precision and vibrancy of the OLYMPUS ZUIKO range of high-quality lenses. Today, building on this heritage, OLYMPUS offers a plethora of photographic ZUIKO DIGITAL and M.ZUIKO DIGITAL lenses specially engineered for the Four Thirds and Micro Four Thirds systems.

All lenses in the ZUIKO range are highly portable with a lightweight and compact housing – making them easy to take along to photo assignments around the world. For adding depth and dynamics or capturing night shots with detail and clarity, OLYMPUS provides the advanced PRO lens range featuring a particularly high aperture of 1:2.8.

With more than 70 different interchangeable lenses available for the OM-D line-up, serious photographers have access to any lens they could ever possibly desire. Telephoto, wide angle, macro, fisheye, with zoom or fixed focal length – the possibilities for exploring creative options and taking photography to a new level are virtually endless.

Backed by this advanced lens line-up, photographers of all genres have the high optical performance, dustproof and splashproof construction, and excellent image quality they need for amazing photos in all shooting environments.

### FACTS

Bright aperture and clear lens quality

ZERO coating to prevent ghosting and flaring

Small and lightweight for high portability

Four Thirds compatible for E-M1\*

More than **70** Micro Four Thirds & Four Thirds lenses available

\* Four Thirds works best with the E-M1, using the MMF-3 lens adapter.

The MMF-3 lens adapter is also required to use Four Thirds lenses with the E-M5 Mark II, E-M10 Mark II and E-M10.



# Expertly crafted lenses: ZUIKO quality – acclaimed around the world.

Designed to meet the needs of the professional photographer, M.ZUIKO DIGITAL lenses were born of an uncompromising commitment to high optical performance and image-rendering quality. Only lenses that meet the stringent OLYMPUS standards – advanced aspherical lens element fabrication techniques, ultra-high-precision lens assembling technology and sophisticated lens measuring technology – are built into the OM-D line-up.



**ZUIKO**  
LENS SYSTEMS





# Brilliant in every way: The OM-D line-up's high imaging quality can hold its own against full-frame cameras.

### Wide dynamic range

Unlike lesser digital cameras, the models of the OM-D line-up are perfectly equipped to handle extreme backlight environments. Their razor-sharp imaging processor and 16-megapixel Live MOS sensor work together with the high-performance M.ZUIKO DIGITAL or ZUIKO DIGITAL lens to deliver superb depictive power.

One result is a wide dynamic range that compensates for the bright and dark areas of the scene simultaneously, providing more defined shapes and features and an overall more spectacular image.

Photo by Diego Garín Martín, E-M5 Mark II,  
M.ZUIKO DIGITAL ED 7-14mm 1:2.8, Exposure  
1/640s, Aperture 9.0, ISO 200

### FACTS

---

Compensation for lateral chromatic aberration

---

Optimal sharpness according to lens or aperture value

---

Reduction of compression artifacts during movie shooting

---

*Features vary from model to model – visit the OLYMPUS website for the latest firmware.  
For specifications, please turn to page 29 or visit us online.*







### Sharp resolution

The high-end OM-D model uses lens and aperture information to apply just the right amount of colour aberration correction and sharpness processing for drawing out the full ability of the lens – providing natural, refined image rendering and clarity. False colours and moiré are expertly suppressed while maintaining sharp resolution.

Photo by Frank Rückert, E-M5, M.ZUIKO DIGITAL ED 60MM 1:2.8 MACRO, Exposure 0.8s, Aperture 6.3, ISO 200

### High ISO performance

The high-speed sensor capability and advanced processing engine of the OM-D line-up are so sophisticated that they reliably reduce noise without compromising on detail and clarity. This can be seen most impressively during low-light shooting at highly sensitive ISO levels of up to 25,600. The composition is accurately and beautifully reproduced, with delicate colour changes and a more natural effect.

Photo information: E-M5 Mark II, M.ZUIKO DIGITAL ED 7-14mm 1:2.8, Exposure 75s, Aperture 2.8, ISO 1600





Just the right OM-D model:  
For every photographer and any shooting style.



CONTINUOUS PROFESSIONAL  
FIRMWARE UPDATES  
AVAILABLE

## E-M1: For Passionate Professionals

Built for professional use, in a perfectly-sized package, the award-winning OM-D E-M1 provides the freedom to take any photo, with all the image quality professional photographers expect from the renowned E-M1 camera.



## E-M5 Mark II: For Creative Enthusiasts

Featuring the world's most powerful image stabilisation system\*, the E-M5 Mark II is a revolution in photo capture and film-making – packed with all the features enthusiast photographers need to capture amazing shots and movies.



## E-M10 Mark II: For Stylish Upgraders

Move up to a new level with the E-M10 Mark II. Although exceptionally compact in size, this camera is equipped with 5-Axis IS for superbly clear images – while paying homage to the classic, stylish design of the original renowned OM-1.



## E-M10: For Inspired Newcomers

Enter the OM-D world. With take-anywhere size, E-M10 is photography made easy wrapped in high design excellence. Full compatibility with M.ZUIKO DIGITAL lenses delivers enhanced creative options with every shot.

A host of awards for  
OM-D cameras (as of 2015)



\*CIPA standard as of June 2015.

# SPECIFICATIONS



Product name	E-M1	E-M5 Mark II	E-M10 Mark II	E-M10
Available colours	silver, black	silver, black	silver, black	silver, black
<b>Image quality</b>				
Effective pixels/Image Sensor	16MP Live MOS	16MP Live MOS, 40M High Res Shot	16MP Live MOS	16MP Live MOS
Image processor	TruePic VII	TruePic VII	TruePic VII	TruePic VII
ISO sensitivity	Low (approx. 100) to 25600	Low (approx. 100) to 25600	Low (approx. 100) to 25600	Low (approx. 100) to 25600
<b>Viewfinder</b>				
Type: Number of dots	2.36M dots EVF (LCD)	2.36M dots EVF (LCD)	2.36M dots EVF (OLED)	1.44M dots EVF (LCD)
Viewfinder coverage	100%	100%	100%	100%
Ratio	1.48x (0.74x in 35mm equiv.)	1.48x (0.74x in 35mm equiv.)	1.23x (0.62x in 35mm equiv.)	1.15x (0.57x in 35mm equiv.)
<b>Shutter</b>				
Shutter speed up to	1/16000s	1/16000s	1/16000s	1/4000s
Flash sync speed	Up to 1/320s	Up to 1/250s	Up to 1/250s	Up to 1/250s
<b>Sequential shooting</b>				
Frames per second S-AF/C-AF	10/9	10/5	8.5/4	8/3.5
Max. number of sequential shots (RAW)	50	24	22	20
<b>Image Stabilisation</b>				
Type	Built-in 5-Axis Image Stabilisation	Built-in 5-Axis Image Stabilisation	Built-in 5-Axis Image Stabilisation	Built-in 3-Axis Image Stabilisation
Compensation amount**	4EV	5EV	4EV	3.5EV
<b>Autofocus (AF)</b>				
Type	DUAL FAST AF	Contrast detection AF	Contrast detection AF	Contrast detection AF
Focus points	81	81	81	81
<b>Movie</b>				
Movie recording	1920×1080, 30p, MOV, Multi Frame Rate (30p, 25p, 24p)*	1920×1080, Multi Frame Rate (60p, 50p, 30p, 25p, 24p)*, MOV, High Bit Rate up to 77Mbps, ALL-Intra shooting	1920×1080, Multi Frame Rate (60p, 50p, 30p, 25p, 24p), MOV, High Bit Rate up to 77Mbps, ALL-Intra shooting	1920×1080, 30p, MOV
Movie format	Full HD and HD, AVI Motion JPEG	Full HD and HD, AVI Motion JPEG	Full HD and HD, AVI Motion JPEG	Full HD and HD, AVI Motion JPEG
Time Lapse movie	4K*, Full HD	4K*, Full HD	4k, Full HD	Full HD
Voice recording	Stereo mic & external mic plug	Stereo mic, external mic plug & optional headphone jack with HLD-8G	Stereo mic	Stereo mic
<b>LCD/Monitor</b>				
Size/Touchscreen	3.0"/yes	3.0"/yes	3.0"/yes	3.0"/yes
Rear Monitor	tiltable	vari-angle	tiltable	tiltable
<b>Size/Weight</b>				
Size	130.4 × 93.5 × 63.1 mm	123.7 × 85 × 38 mm	119.5 × 83.1 × 46.7 mm	119.1 × 82.2 × 41.4 mm
Weight (incl. battery and memory card)	497g	469g	390g	396g
Body material	Magnesium alloy	Magnesium alloy	Metal housing	Metal housing
<b>Others</b>				
Flash	Bundled (FL-LM2)	Bundled (FL-LM3)	Built-in	Built-in
Wi-Fi	Wireless shooting, image sharing, GPS tagging	Wireless shooting, image sharing, GPS tagging	Wireless shooting, image sharing, GPS tagging	Wireless shooting, image sharing, GPS tagging
Battery lifetime	330 images	310 images	320 images	320 images
Focus stacking/Focus bracketing	yes*/yes*	no/yes*	no/yes	no/no
Dust/splash/freezeproof	yes	yes	no	no
Tethered shooting	yes*	yes*	no	no
Operability	2x2 dial control, most professional handling	2x2 dial control	2 dials	2 dials

\*Latest firmware update

Features marked with \*, plus additional features, are available or can be updated with the latest firmware update at [www.olympus-europa.com/firmware](http://www.olympus-europa.com/firmware).

\*\*CIPA standard as of June 2015.

For all detailed information, please go to [www.olympus-europa.com/om-d](http://www.olympus-europa.com/om-d)

OLYMPUS OM-D

29

# LENSES

Even more creative freedom: Lenses for exploring a wider world of creative options.



## M.ZUIKO DIGITAL ED 12-40mm 1:2.8 PRO

Professional standard zoom with constant bright aperture for telemacro shooting up to 20cm away, featuring a dust/splashproof construction and handy MF Clutch.



## M.ZUIKO DIGITAL ED 40-150mm 1:2.8 PRO

Telephoto zoom lens with a constant bright aperture and a rugged dust/splashproof build for professional use. Ideal complement to the 12-40mm lens.



## M.ZUIKO DIGITAL ED 300mm 1:4.0 PRO

Single-focal, super-telephoto lens that packs superb depictive performance in a compact body that is dustproof and splashproof.



## M.ZUIKO DIGITAL ED 7-14mm 1:2.8 PRO

Dust/splashproof wide-angle zoom lens providing high sharpness to the image's edge and constant brightness over the whole zoom range.



## M.ZUIKO DIGITAL ED 8mm 1:1.8 Fisheye PRO

World's first fisheye lens featuring an aperture of 1:1.8\*, also made for outdoor assignments thanks to a robust dust/splashproof body.



\*In-house research as of June 2015.

For sample photos, please visit [www.olympus-europe.com/inspiration](http://www.olympus-europe.com/inspiration)

Dust/splashproof





**M.ZUIKO DIGITAL ED 12mm 1:2.0** ● ●  
Compact metal lens with Movie & Still Compatible autofocus mechanism for fast, no-fuss shooting in high-quality of both stills and movies.



**M.ZUIKO DIGITAL ED 60mm 1:2.8 Macro** ● ●



**M.ZUIKO DIGITAL 45mm 1:1.8** ● ●



**M.ZUIKO DIGITAL 17mm 1:1.8** ● ●



**M.ZUIKO DIGITAL ED 75mm 1:1.8** ● ●



**ZUIKO DIGITAL 25mm 1:1.8** ● ●



**M.ZUIKO DIGITAL ED 75-300mm 1:4.8-6.7 II** ● ●



**M.ZUIKO DIGITAL 17mm 1:2.8** ● ●



**M.ZUIKO DIGITAL 14-150mm 1:4.0-5.6 II** ● ●



**M.ZUIKO DIGITAL ED 9-18mm 1:4.0-5.6** ● ●



**M.ZUIKO DIGITAL 40-150mm 1:4.0-5.6 R** ● ●



**M.ZUIKO DIGITAL ED 12-50mm 1:3.5-6.3 EZ** ● ●



**M.ZUIKO DIGITAL ED 14-42mm 1:3.5-5.6 EZ** ● ●

Dust/splashproof

Enhanced photography: Accessories for an even higher level of photo or film shooting.



## Flash System FL-600R

Flash system with built-in LED, designed for difficult illumination conditions and featuring four-channel/group wireless photographic functionality.



## System Camera Bag CBG-10

Stylish, compact bag featuring a spacious interior – for safely storing the camera with lens and power battery holder – and plenty of pockets.



## PT-EP11 Underwater Case (for E-M1) & Underwater Case PT-EP13 (for E-M5 Mark II)

Waterproof up to a depth of 45m, this underwater case offers a clear, large view of the underwater world together with wireless flash control.



## Lens Adapter MF-2/MMF-3

MMF-3 is a dust and splashproof, solid-built lens adapter with a firm fixing – for Four Thirds system lenses (MMF-3) and manual-focus OLYMPUS OM (MF-2) system lenses.

Dust/splashproof



#### Power Battery Holder HLD-7 (for E-M1)

Dust/splash/freezeproof power battery holder, with an extra shutter button that extends operation time and allows more flexibility in portrait shooting.



#### OLYMPUS OI.SHARE APP

OI.Share enables images to be easily imported to a smartphone for sharing on social sites – or the smartphone to be used as a remote control. GPS tags can also be added to photos. The OI.Share app is available free of charge in your App Store.



#### Battery Grip HLD-8 (for E-M5 Mark II)

Supporting battery grip featuring additional buttons and dials and an innovative design with two different types of grips: for landscape and portrait shots.



Lens Hood LH-61F (for M.ZUIKO DIGITAL ED 75mm)



Lens Hood LH-48B (for M.ZUIKO DIGITAL 17mm 1:1.8)



Lens Cap LC-61 (for M.ZUIKO DIGITAL ED 75mm)



Remote Control RM-UC1

Specifications, availability and appearances are subject to change without any notice or obligation on the part of the manufacturer. Some of the images featured only serve for illustrative purposes. The colours of products printed herein may differ from those of the actual products. Four Thirds and Micro Four Thirds are registered trademarks of OLYMPUS Imaging Corporation. All other company and product names are registered trademarks and/or trademarks of their respective owners. The pictures in the LCD monitors are simulated. The data herein is correct as of August 2015.



# OM-D SYSTEM

## FOR USE WITH ALL LENSES



VF-3  
(for E-M1 only)



VF-4  
(for E-M1 only)

### Electronic Viewfinders

High-resolution eye-level digital viewfinders that easily slide onto the hot shoe of the camera body to provide 100% field of view. Ideal for bright outdoor shooting. VF-3 has 0.92M dots resolution and 1.0x magnification; VF-4 has 2.36M dots resolution and 1.48x magnification. Both can be angled at 90 degrees.

## FOR USE WITH 17MM



**Optical Viewfinder**  
Matches viewing angle of 17mm lenses

VF-1

## Viewfinders

### E-M1 AND E-M5 MARK II

#### BATTERY



BLN-1

#### BATTERY CHARGER



BCN-1

### E-M10 AND E-M10 MARK II



BLS-50  
(for E-M10 Mark II)



BLS-5  
(for E-M10)



BCS-5

### POWER BATTERY HOLDERS

for E-M1



HLD-7



HLD-8



HLD-8 G

### AC ADAPTER



AC-3  
(only for HLD-7 or HLD-8)

## Power System

## Underwater Housings (45m depth)



PT-EP11 (for E-M1)



PT-EP13 (for E-M5 Mark II)

## OM-D

### E-M1



E-M1

### E-M5 Mark II



E-M5 Mark II

### E-M10



E-M10

### WIDE ANGLE PRIME



**M.ZUIKO DIGITAL 12mm**  
1:2.0  
35mm equivalent = 24mm

Professional grade, super wide-angle fast prime with manual focusing clutch and depth of field scale. All-metal exterior.

LH-48 (metal)  
LC-46  
LC-48 (metal)

### WIDE ANGLE PRIME



**M.ZUIKO DIGITAL 17mm**  
1:1.8  
35mm equivalent = 34mm

Professional grade, wide-angle fast prime with manual focusing clutch and depth of field scale. All-metal exterior.

LH-48B  
LC-46  
LC-48B

### PANCAKE WIDE PRIME



**M.ZUIKO DIGITAL 17mm**  
1:2.8  
35mm equivalent = 34mm

Ultra-compact prime lens for easy snapshot style photos. Minimises overall camera size.

LC-37B

### STANDARD PRIME



**M.ZUIKO DIGITAL 25mm**  
1:1.8  
35mm equivalent = 50mm

Fast standard lens. Natural angle of view for universal use.

LH-49B  
LC-46

### PORTRAIT PRIME



**M.ZUIKO DIGITAL 45mm**  
1:1.8  
35mm equivalent = 90mm

High performance, fast portrait lens. Special optical design enhances smooth background blur effect.

LH-40B  
LC-37B

### MACRO PRIME



**M.ZUIKO DIGITAL 60mm**  
1:2.8  
35mm equivalent = 120mm

High performance, short telephoto macro lens with 1:1 capability.

LH-49  
LC-46

### TELEPHOTO PRIME



**M.ZUIKO DIGITAL 75mm**  
1:1.8  
35mm equivalent = 150mm

High performance, super fast aperture intermediate telephoto lens.

LH-61F (metal)  
LC-58E  
LC-61 (metal)

### ULTRA WIDE ANGLE ZOOM



**M.ZUIKO DIGITAL 9-18mm**  
1:4.0-5.6 II  
35mm equivalent = 18-36mm

Ultra wide-angle zoom for breathtaking wide vista shots.

LH-52B  
LC-52C

### UNIVERSAL ZOOM



**M.ZUIKO DIGITAL 14-150mm**  
1:4.0-5.6 II  
35mm equivalent = 28-300mm

Ultra-zoom, wide-to-telephoto (10.7x) lens with a weatherproof body – the convenient one-lens solution while travelling and for general photography.

LH-61C  
LC-58E

### SUPER TELEPHOTO ZOOM

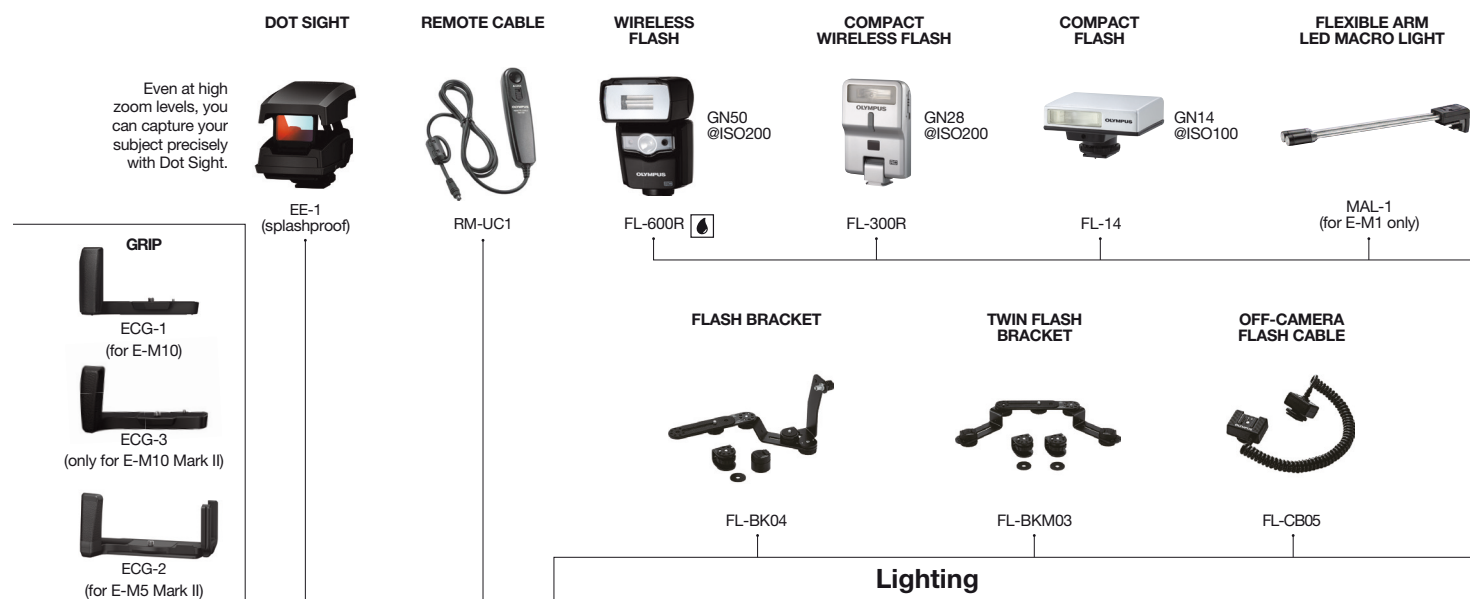


**M.ZUIKO DIGITAL 75-300mm**  
1:4.8-6.7 II  
35mm equivalent = 150-600mm

A super telephoto zoom that brings the furthest subject really close.

LH-58C  
LC-58F

Dust/splashproof



OM-D camera models come in various kit lens configurations.

#### BODY CAP LENS



**Body Cap Lens 15mm**  
1:8  
35mm equivalent = 30mm

Wide angle fixed aperture lens for snapshot photography. Manual focus.

**Body Cap Lens 9mm Fisheye**  
1:8  
35mm equivalent = 18mm

Fisheye fixed aperture lens for snapshot photography. Manual focus.

#### Lens Adapters



MF-2



MMF-3

#### Lens Converters



MCON-P02



FCON-P01



WCON-P01



MC-14 compatible with 40-150mm PRO 1:2.8 and 300mm 4.0

#### Lenses

##### TELEPHOTO ZOOM



**M.ZUIKO DIGITAL 40-150mm R**  
1:4.0-5.6  
35mm equivalent = 80-300mm

Compact, lightweight telephoto zoom equivalent to 300mm offering high performance and terrific value.

LH-58C  
LC-58E

##### STANDARD WIDE ZOOM



**M.ZUIKO DIGITAL 12-50mm**  
1:3.5-6.3 EZ  
35mm equivalent = 24-100mm

Weatherproof standard zoom lens for general photography. Smooth electronic zoom action is optimised for video.

LH-55C  
LC-52C

##### STANDARD WIDE ZOOM



**M.ZUIKO DIGITAL 14-42mm II R**  
1:3.5-5.6  
35mm equivalent = 28-84mm

High performance, standard zoom lens for general photography. Bayonet lens front enables use of optional lens converters.

LH-40  
LC-37B

##### STANDARD PANCAKE ZOOM



**M.ZUIKO DIGITAL 14-42mm EZ**  
1:3.5-5.6  
35mm equivalent = 28-84mm

High performance, standard pancake zoom lens, for best optical performance in a slim body to achieve a small body lens combination.

LC-37B

##### PROFESSIONAL STANDARD WIDE ZOOM



**M.ZUIKO DIGITAL 12-40mm PRO**  
1:2.8  
35mm equivalent = 24-80mm

Professional, bright aperture, wide-angle, standard zoom lens. Super high performance optics with weatherproof design.

LH-66  
LC-62D

##### PROFESSIONAL ULTRAFAST FISHEYE



**M.ZUIKO DIGITAL 8mm FISHEYE PRO**  
1:1.8  
35mm equivalent = 16mm

World's fastest fisheye lens with a max. aperture of 1:1.8\* and dust/splashproof body for professional-grade shooting in any conditions.

integrated  
LC-62E

\* in-house research 2/2015

##### PROFESSIONAL TELEPHOTO ZOOM



**M.ZUIKO DIGITAL 40-150mm PRO**  
1:2.8  
35mm equivalent = 80-300mm

Professional grade, super high performance zoom lens that covers the most frequently used intermediate telephoto range. Fully weatherproof.

LH-76  
LC-72D

##### PROFESSIONAL SUPER WIDE ANGLE ZOOM



**M.ZUIKO DIGITAL 7-14mm PRO**  
1:2.8  
35mm equivalent = 14-28mm

Fast, high performance, ultra wide angle zoom lens that covers the wide angle range to shoot astonishing architecture and landscape images. Fully weatherproof.

integrated  
LC-79

##### PROFESSIONAL TELEPHOTO LENS



**M.ZUIKO DIGITAL 300mm PRO**  
1:4.0  
35mm equivalent = 600mm

Fast professional telephoto lens that brings furthest subjects really close. Perfect for sport and animal photography. Fully weatherproof. (under development)

TBA  
TBA

**OLYMPUS**

Printed in Germany - OEKG - CPD - 09/2015 - EN EU - E0470743

