

# OM-D<sub>E-M1</sub>

**OLYMPUS**

Your Vision, Our Future



Move into a New World



All in one: The perfectly-sized system camera with the world's most advanced lens line-up.



**65** Micro Four Thirds & Four Thirds lenses available



**ZUIKO**  
LENS SYSTEMS

The new E-M1 is the most advanced compact system camera ever produced. It comes packed with sophisticated technologies that outperform D-SLR cameras in terms of image quality, versatility and reliability. These advantages are matched by a body design that is the perfect size with a portable weight. The E-M1 also incorporates a newly developed image sensor and image processing engine which enable it to exploit the maximum performance of each and every one of the 65 lenses in the line-up, achieving higher image quality than any other Olympus camera. That superior imaging capability is supported by a large, full-size SLR-class electronic viewfinder and built-in 5-axis image stabilisation mechanism that ensures stable, accurate composition and shooting performance.

As befits a camera that represents the peak in photographic performance, the E-M1 features a rugged, jet-black body with a pro-style, high-comfort, easy-hold grip, plus reliable dust/splash proofing along with temperature resistance thanks to a magnesium body and special sealing. Compliant with the Micro Four Thirds System standard, which has successfully miniaturised today's most advanced imaging technologies. The E-M1 combines the highest professional standards of quality and performance with user-friendly features and functions that make it the ideal camera for any user in any environment. Discover more at [www.olympus-europa.com/e-m1](http://www.olympus-europa.com/e-m1)



## High Image Quality: Enjoy the best imaging performance in the history of OLYMPUS. The E-M1's ultra-fine resolution weaves images of unprecedented beauty.

Three technologies combine to give the E-M1 the best image quality ever achieved by an Olympus camera. The Zuiko lens with its high-precision imaging, the newly developed TruePic VII image processing engine with its powerful corrective and enhancement capabilities and the new 16M Live MOS Sensor for more natural image capturing. The newly developed TruePic VII image processing engine features "Fine Detail II" for optimum image processing according to the lens in use and shooting conditions. TruePic VII accurately corrects the transverse colour aberration that varies depending on the lens, as well as optimally processing image sharpness according to the lens in use and the aperture setting. The result is an image of extraordinary quality, highly resolved down to the finest details and incredibly true to life. That image quality is further enhanced by the new 16M Live MOS Sensor with high megapixel performance enabling it to reduce noise significantly, making it possible for a smooth transition between light and dark parts with a wide dynamic range. These latest technologies take full advantage of the awesome power in Zuiko lenses which have inherited the legendary performance of Olympus's traditional optical technology. The astonishing, unprecedented imaging performance that these technologies produce make the E-M1 a worthy

flag bearer for the next generation of Olympus digital system cameras.

### **[ZUIKO Lens System]**

Including both Four Thirds System lenses featuring the highest imaging performance among digital SLR lenses and Micro Four Thirds System lenses which distil that same great image quality into a more compact format. The Zuiko lens system represents the culmination of decades of Olympus innovation. Exclusively designed for digital imaging, these lenses eliminate the compromises that hamper conventional lens performance, ensuring sharp, clear imaging throughout the image plane. With an extensive line-up that includes an impressive selection of wide-angle, telephoto and macro lenses, Olympus's Zuiko lens system gives you the opportunity to capture your vision in rich, stunning images.

### **[New 16M Live MOS Sensor]**

The newly developed 16M Live MOS Sensor dramatically reduces noise in the high-sensitivity domain and improves colour reproduction thanks to reduced chromatic noise in high sensitivity shooting. Together with the expanded dynamic range, this enables smooth gradations in scenes where wide variations between

light and dark exist, beautifully reproducing lights and shadows that could not previously be rendered naturally. ISO sensitivities extend up to an incredible 25600 on the high end and as low as ISO LOW (equivalent to ISO100). In combination with the 1/8,000 sec. high-speed shutter, this makes it possible for a wider range of expressions including defocusing in a bright daylight scene.

### **[New TruePic VII Image Processing Engine]**

The Fine Detail II feature inputs data on the lens and current shooting conditions to the camera and optimizes image correction accordingly. This includes correction of transverse colour aberration (when the edges at the image periphery are coloured) and correction of contour line sharpness, ensuring faithful reproduction of the subject with fine details and natural-looking textures. TruePic VII also incorporates moiré reduction processing to support the camera's low pass filter-less design, as well as new moving image processing circuitry to reduce the block noise that tends to be produced during a sudden scene change in movie shooting.



### 1.48x Viewfinder Magnification Comparable to Full-Size Cameras

With magnification comparable to full-size cameras (1.48x – which is equivalent to 0.74x on a 35mm camera), enhanced optics that enable you to clearly view the entire LCD screen from corner to corner without moving your eye and improved colour reproduction thanks to the advanced image processing engine. This high-definition viewfinder provides a more natural, comfortable way to compose your shot with higher subject visibility and easier focusing than previous viewfinders.

# Large electronic viewfinder: What you see through the 1.48x magnification and high 2.36 million-dot resolution is comparable to the view provided by full-sized cameras.

Packed with advanced creative functions for discretionary control over lights and colours, as well as offering high magnification and high definition, this new viewfinder features magnification of 1.48x (equivalent to 0.74x on a 35mm camera), which is comparable to a full-sized SLR camera and high resolution of 2.36-million dots, enabling it to render images with excellent resolution and colour reproduction. The display time lag is almost zero so even moving objects can be shot quickly. The Adaptive Brightness Technology automatically adjusts the brightness of the viewfinder's backlight according to changes in the environmental light, assuring excellent visibility

regardless of the brightness and providing a clear view just like optical viewfinders. Also incorporated is an eye sensor that detects the motion of the eye looking into the viewfinder and switches the viewfinder display and the rear LCD monitor display accordingly, thereby enabling comfortable viewfinder shooting with ultrafast switching speed. The Creative Control function, which makes possible image creation using one button and two dials without removing the eye from the viewfinder, now, includes a Colour Creator feature for correcting the colour tone. Now, all four operations necessary for photographic image creation – gradation, focusing, composition and

colour tone control – are possible while checking the final result on the viewfinder screen.

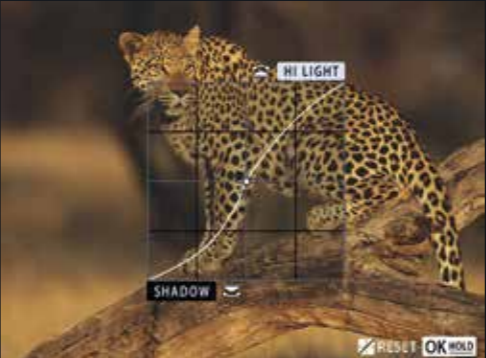
**[LV dynamic range extension (HDR Live View display)]**  
During selection of the two HDR modes for image synthesis in the camera, the image corresponding to the HDR1 mode with extended dynamic range can be displayed with a view close to the one in the optical viewfinder.



**Automatic backlight intensity adjustment – Adaptive Brightness Technology**  
Since the human eye adapts to environmental brightness, the image displayed on the EVF tends to look dark in bright environments and bright in dark environments. This visual error can now be reduced by the new Adaptive Brightness Technology that adjusts the intensity of the EVF backlight. This feature prevents incorrect exposure correction due to visual error by brightening the backlight in bright environments and darkening it in dark environments. This enables accurate exposure correction similar to that obtained when an optical viewfinder is used.



**[Colour Creator]**  
Operation of the front and rear dials makes it possible to have intuitive dynamic control of the hue (30 steps) and saturation (9 steps). This feature allows you to create a more artistic image in a number of ways: you can adjust colours in a warmer direction to reduce colour cast, while maintaining vividness; in a colder direction to create a realistic atmosphere with a transparent feeling; or change to monochrome to enhance the 3D feeling using a colour filter.



**[Highlight & Shadow Control]**  
Highlight and shadow areas can be adjusted while checking the correction results on the viewfinder screen so that even detailed adjustment of brightness and darkness is easy. Each of the highlight and shadow areas can be adjusted in +/-7 steps to render the picture more natural or more dynamic through creative adjustment of lights and shadows.



**[Aspect Control]**  
You can change the aspect ratio of the picture while looking into the viewfinder to get the image you want. Five aspect ratios are available: 4:3, which is the standard; 16:9, the format used in most movies, 1:1, which is completely square; 3:2, which is identical to the format used by 35mm film cameras; and, 3:4, which enables vertical composition without changing the camera position.



**[Magnified Display Control]**  
Fine focusing by magnifying the subject image, which is impossible with optical viewfinders, is available now to make focusing more accurate. The image magnification rate can be selected from 5x, 7x, 10x and 14x. Both fine focusing and ease of image composition are available with this camera.

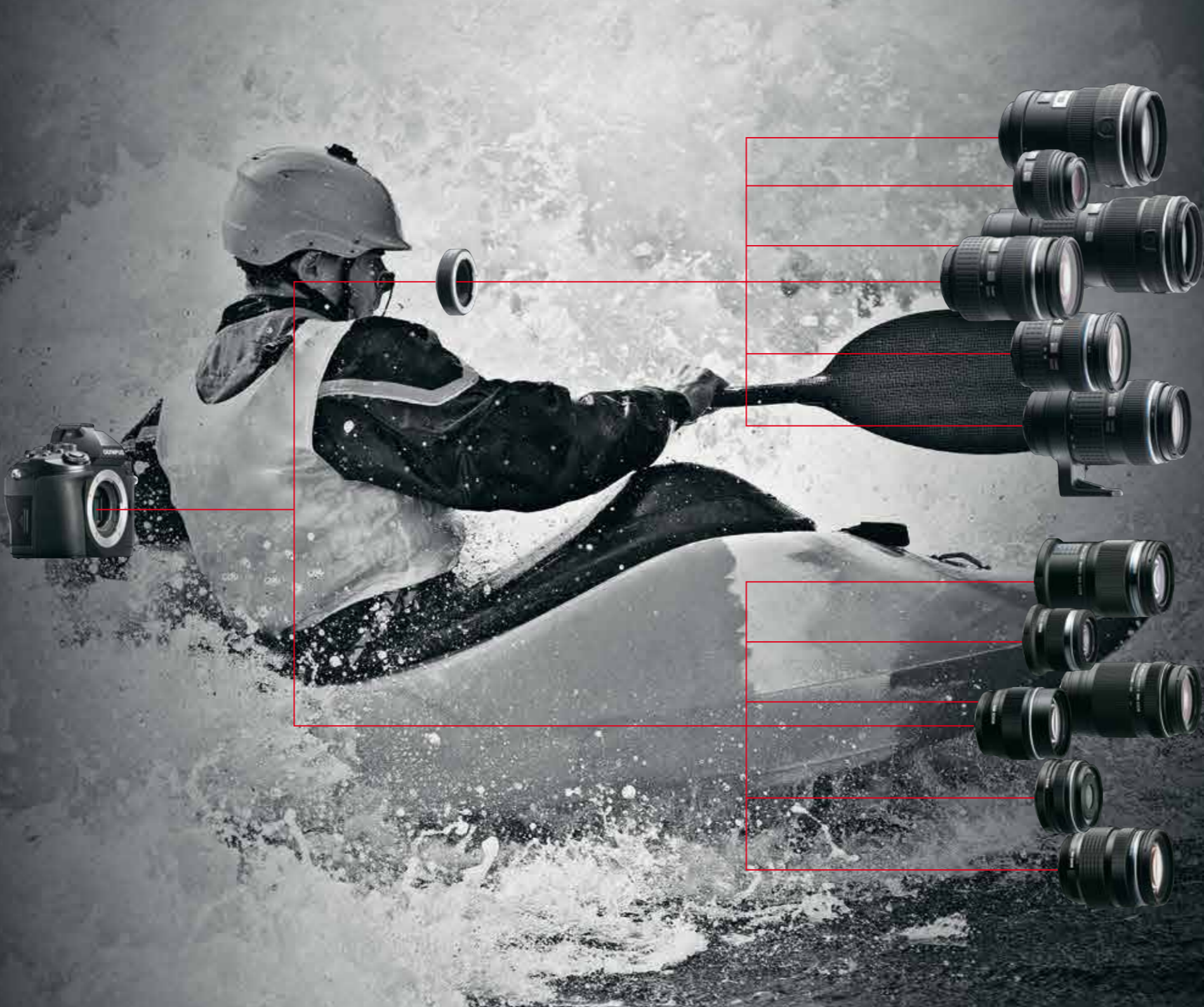
Olympus's Zuiko lens system is famous for its excellent optical characteristics and imaging performance. To fully exploit the extraordinary performance these lenses are capable of, Olympus developed the Dual FAST AF, a revolutionary AF system. Thanks to the Dual FAST AF, this camera achieves fast, accurate autofocus by using the on-chip phase detection AF with the Four Thirds System lenses and using both contrast detection AF and on-chip phase detection AF with the Micro Four Thirds System lenses. The Dual FAST AF

# Dual FAST AF: Revolutionary ultrafast AF system that is extremely quick and incredibly accurate.

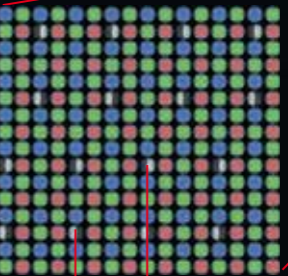


DUAL FAST AF

makes sequential shooting speed possible under C-AF 6.5 fps\*, which is enough to allow you to easily track the motion of a fast moving subject moving forward or backward, such as an athlete playing a game or an animal on the run. The completely new Dual FAST AF allows any Zuiko lens to capture any scene instantly.



## Dual FAST AF with on-chip phase detection AF



On-chip phase detection AF sensor

The Dual FAST AF uses the on-chip phase detection method with phase detection AF sensors embedded in the image sensor to keep the body size at a minimum. The arrangement of the phase detection AF sensors is optimally balanced so that they can adjust focus accurately.



### Distance measuring points of contrast detection AF and phase detection AF

Both the 81-point contrast detection AF and 37-point on-chip phase detection AF are capable of fine autofocus across a wide area and compatible with the Small AF Target feature for pinpoint AF, as well as the Group Target AF feature for specifying AF points in a wider range. The new AF system (which achieves high speed and high accuracy based on the on-chip phase detection AF method) can also handle Four Thirds System lenses with ease. The excellent tracking performance makes sure you never miss the exact moment you want to capture even when shooting a moving object.

## 5-axis Image Stabilisation: Unparalleled stabilisation performance in any direction.

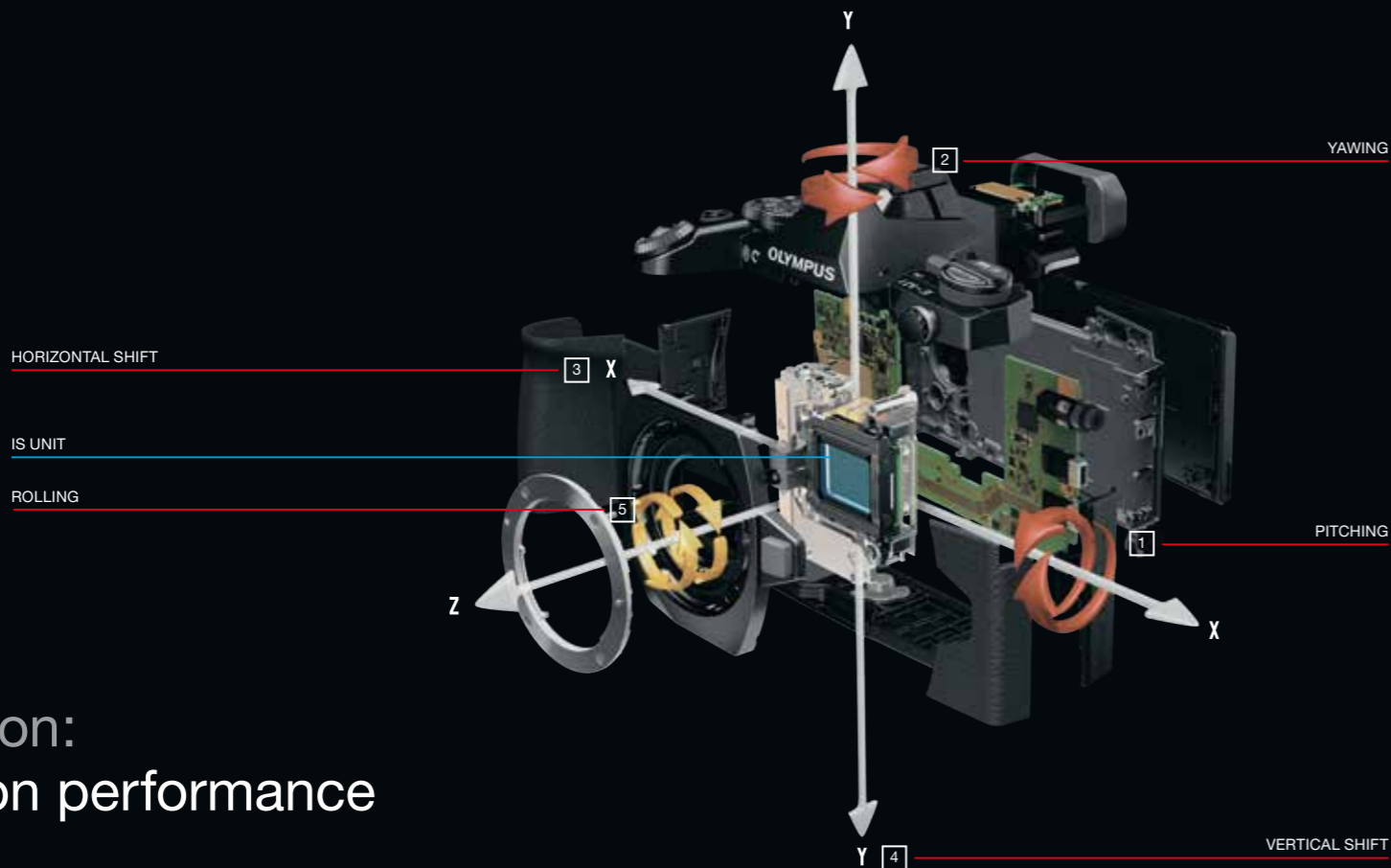
Olympus's 5-axis image stabilisation ensures maximum image stability in any direction. With the E-M1, we have taken this powerful system to the next level, achieving a degree of stabilisation that no other system can match. With up to 4 steps\* of compensation and improved algorithms for low shutter speeds, this new stabiliser makes handheld shooting possible even in scenes that previously required a tripod. The mechanism is built into the camera body so it is highly effective regardless of the lens mounted on the camera. Accurate compensation of camera shake is possible even with a pancake lens, with which image stabilisation is usually not possible with a camera

system incorporating the stabilisation mechanism inside the lens. Also incorporated is an IS-AUTO feature that detects camera motion direction to optimise image stabilisation regardless of whether the camera is panned, tilted or moved obliquely. During movie shooting, the multimotion IS control stabilises images to compensate for fluctuations caused by walking or breathing, making stable shooting possible in any kind of scene.

### [5-axis image stabilisation unit]

The 5-axis drive method uses five image stabilisation axes including the "vertical and horizontal turn trans-lations in the up-down and left-right

directions" and "vertical and horizontal shift rotation around the optical axis" in addition to the traditional "camera roll along the optical axis angular shake in the up-down and left-right directions". It can compensate for camera movements that could not be compensated for with the 2-axis drive method such as the vertical camera shake noticeable in macro shooting and the rotary-direction camera shake produced in slow-shutter shooting. The sensor located on the optical axis of the viewfinder accurately detects camera shake and the image stabilisation system instantly compensates for any camera shake.



### [Gyro Sensor]

The gyro sensor quickly and accurately detects camera shake using 70 µm-square crystal chips that can pick up even the slightest inclination of the camera. The sensor is securely mounted so that it is not affected by vibrations inside the camera. This provides stable and accurate detection of all vibrations that can affect camera stability.

### [Stabilised Live View image]

You can check the image stabilisation effect on the Live View screen – something previously considered difficult with systems in which the image stabilisation mechanism is built into the camera body. When the shutter button is half-pressed or the AF frame is magnified, the image stabilisation mechanism is activated automatically. The stabilised image is displayed on the electronic viewfinder and LCD monitor so image composition and focusing is possible by monitoring the stabilised image even in macro or telescopic photography.





## Dust-/splash-proofing and low temperature resistance: Rugged design expands your field of photography to any place on earth.

Olympus is committed to building cameras whose outstanding performance is never held hostage by the rigors of the environment. Rain or snow, mud or dust – the E-M1 is ready for whatever the world can throw at it. Resistant to cold temperatures as low as -10°C, as well as boasting a dust-/splash-proof body able to withstand heavy professional use, this camera's internal structure is made of lightweight, high-strength magnesium alloy to ensure the high rigidity required to withstand external impacts and to maintain long-term durability. All points

where water could penetrate, including the joint sections of the body, opening/closing sections of the covers and controls such as buttons and knobs, are sealed with an airtight, weather-resistant rubber material with special coating for high dust-/splash-proofing. Similar sealing is also used on the flash, power battery holder and lens(es)\* mount to provide the entire camera system with high resistance against penetration of sand, dust, raindrops and water splashes, allowing you to explore even the most extreme environments in your quest for the ultimate image. A unique dust

reduction system keeps dust from getting in the camera when you change lenses. Using an SSWF (Super-Sonic Wave Filter) installed in front of the image sensor that oscillates at an ultrahigh speed of 30,000 turns/second. This system literally flicks foreign objects away from the sensor, keeping it dust-free and assuring artefact-free images. Durability, reliability, and unmatched toughness have made Olympus cameras the choice of many professional photographers.



Easy sharing of SLR-quality images by connecting to a smart device

The first OM-D camera to feature built-in Wi-Fi system, the E-M1 can connect to your smart device via Olympus Image Share, an effective app that makes it easy to share with your friends and enables true wireless photography. Just tap the Wi-Fi button of the camera to connect to smart device via Olympus Image Share and share your pictures as soon as you take them by transferring them to a smart device with one-touch operation and uploading to a blog or SNS. With the E-M1, you can even use your smart device to operate your camera. In addition to releasing the shutter using the Wireless Touch AF Shutter release function, you can select the camera mode (P/A/S/M/iAUTO) and adjust various settings required for picture shooting, from shutter speed and aperture adjustments to ISO, white balance and exposure compensation controls. Sequential shooting and Live Bulb shooting can also be controlled wirelessly. In addition to the convenience of wireless operation, the E-M1 comes with an impressive set of features expressly designed to unleash your creative genius, such as twelve Art Filters to enhance your images in unique and memorable ways. Location information attribution is also available, letting you append a GPS tag to each picture.



Easy 2-step initial setup

The E-M1 is compatible with QR codes so setting up the Wi-Fi connection between the camera and smart device(s) is as easy as 1-2-3. Just touch the Wi-Fi button in the top left corner of the camera's LCD monitor to switch the display to the Private Connection display, and then read the QR code displayed there with the smart device(s) to complete the initial setup: Two simple steps and you're done. Once initial setup is completed, pictures in the camera can be uploaded to the smart device(s) at the touch of a button. Now, thanks to the E-M1 state-of-the-art communications capability, operations that were once complicated and cumbersome, such as initial Wi-Fi setup and picture transfer to smart device(s), are quick and easy.



**OI.Share**  
OLYMPUS IMAGE SHARE  
Read the QR code to access  
to the website to download  
the OI.Share.



Camera setup from smart device

Just about the only thing your smart device can't do with your camera is point and aim it. Everything else – including selecting the shooting mode from P/A/S/M/iAUTO, setting the shutter speed, aperture, exposure compensation, ISO sensitivity and white balance, and even controlling sequential shooting and Live Bulb/Live Time\* shooting – can be done with your smart device. This gives you enormous shooting flexibility, making it easy to tap into the powers of advanced photography that wireless control makes possible.

Wireless Touch AF Shutter

You can display the camera's Live View image on your smart device for remote shooting just like you would on the camera, namely by touching the subject to focus on it and release the shutter. With almost no time lag, it's just like touching the camera's LCD monitor. When taking pictures of yourself or a group, you can set the timer on the smart device instead of the camera. Also, you can pre-record your own countdown on your smartphone and use that as the notification that the shutter will be released.



Image processing using smart device application

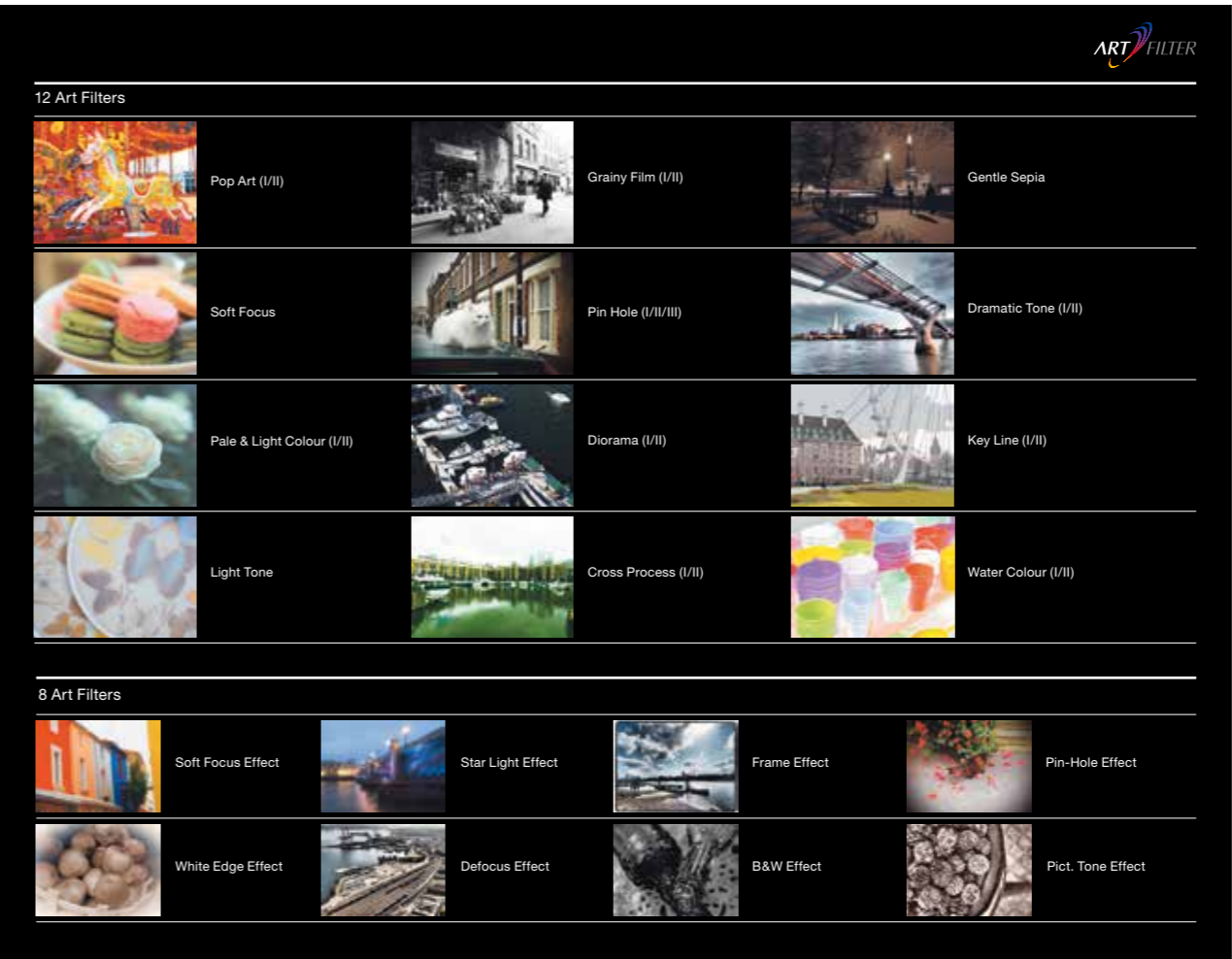
Olympus Image Share also gives you access to powerful Olympus image processing features such as the twelve Art Filters, which give you the ability to express your creativity in many different ways. Other features include Photo Story + (plus), which allows you to compile pictures into a visual story and apply stamps to the images for a more entertaining experience, as well as Signature, which lets you attach your signature to your pictures. Better yet, you can process any previously captured or stored JPEG image, not just the new ones taken with your camera.

Image Share Reservation

Touch the Share button on the camera's playback display to mark the picture for sharing. When the camera is connected to the smart device, only the marked pictures are displayed. Just tap the Transfer button to transfer the marked pictures to the smart device. This allows you to immediately upload only the pictures you want to share with one-touch operation.

GPS tag appending

GPS information obtained with the smart device can be appended as tags to the pictures stored in the SD card in the E-M1. When the provided "OLYMPUS Viewer 3" image management software is used, mapping of the picture shooting locations is also possible.

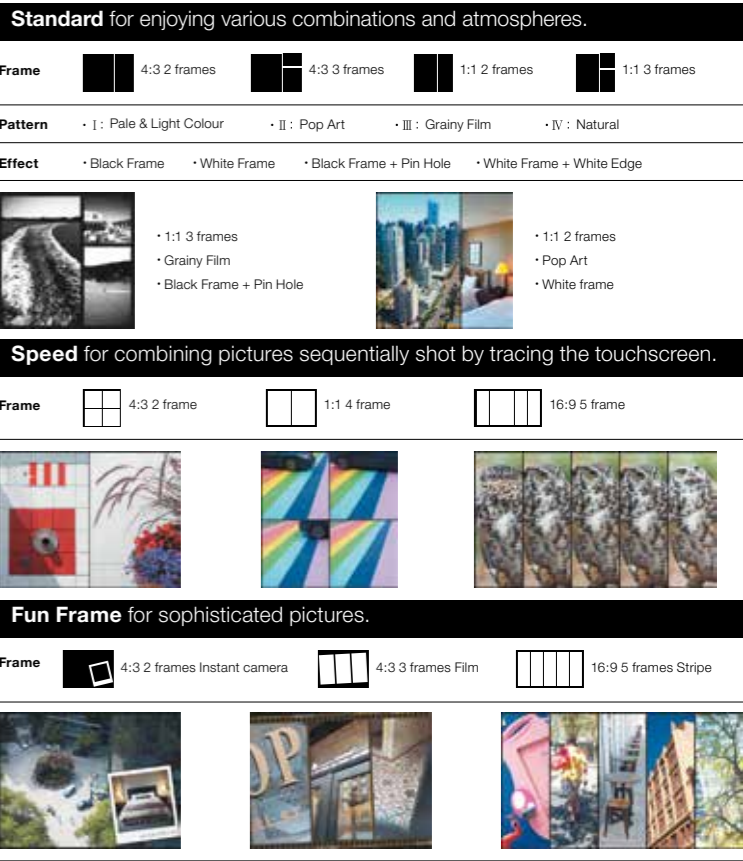


Twelve Art Filters

Olympus-original Art Filters let you put the finishing touch on your pictures with a dash of artistic flair. Now you can make a landscape photo look like a painting or create a fantastic world out of everyday life. Photographic effects previously impossible without special lenses or computer processing can now be reproduced in the camera. The E-M1 incorporates all twelve Art Filters, making it easy to take full advantage of the various styles available, including: "Pop Art", which enhances colours; "Soft Focus" that expresses an airy feeling in soft tones, giving the image a dream-like quality; and "Light Tone", which renders both highlights and shadows more softly. New additions include "Diorama II", a variation on the existing "Diorama" that creates the look of a miniature diorama. The new variation allows you to create a diorama-like world, in which the areas above and below the focus point are defocused even in pictures with vertical compositions. When the eye-priority AF is activated in normal shooting, you can capture a portrait with a unique feeling of depth, in which areas to the left and right of the focused eye are blurred.

Photo Story

By imaging a single scene from multiple viewpoints, Photo Story offers a new way to express yourself photographically. Simply touching the Story Window on the LCD monitor allows you to compile a work of art by combining multiple pictures, while accentuating their composition and colours in different ways. In addition to Standard, capable of combining four layouts, four Art Filters and four effects, and Fun Frames, enabling instant camera and film type expressions, the E-M1 features a new frame called Speed, which can combine sequentially shot pictures by tracing the touchscreen panel. The variations specially created for Photo Story make it easy to tell a story that cannot be told with a single picture by combining multiple images into a single piece of work. By transforming multiple pictures into an artistic creation, Photo Story continues the Olympus tradition of photography as a means of expression.



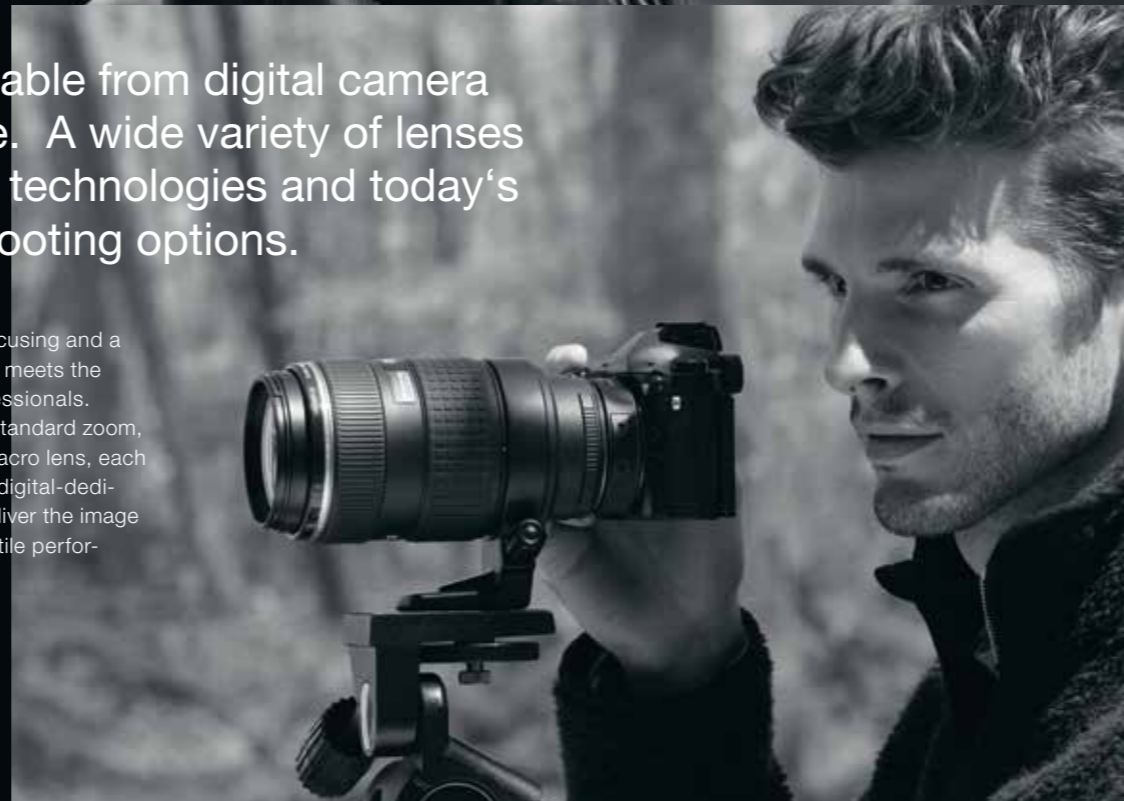


**ZUIKO Lens System: Delivering the finest imaging performance available from digital camera lenses today, ZUIKO Lens Systems is the proven professional choice. A wide variety of lenses are available. All boasting a unique combination of traditional optical technologies and today's most advanced technologies, providing an extraordinary range of shooting options.**

The pride of Olympus, ZUIKO DIGITAL lenses are available in full-size digital SLR versions and compact M.ZUIKO DIGITAL lenses designed to bring full-size imaging performance to our line of Micro Four Thirds cameras. Fabricated using ultra-precision polishing technology, advanced aspherical forming technology, fine assembly technology and cutting-edge lens measurement technology these lenses must meet the most stringent "ZUIKO QUALITY" standards before they can bear the ZUIKO name. All the ZUIKO Lens System lenses feature a digital-dedicat-

ed design that minimizes any potential loss of quality and light intensity at the periphery of the image or in wide-angle shooting, ensuring that the entire picture is imaged sharply and clearly. Other enhancements to maximize image quality include ZERO coating, which prevents reflections using the same thin film control technology developed for Olympus microscopes, our exclusive large-aperture DSA (Dual Super Aspherical) lens fabrication technology that corrects aberrations, the MSC (Movie & Still Compatible) mechanism with linear motor drive that increases the speed

and decreases the noise of autofocus and a dust/splash proof mechanism that meets the heavy-duty requirements of professionals. Whether it is a wide-angle zoom, standard zoom, telephoto zoom, single-focus or macro lens, each and every one of our outstanding digital-dedicated lenses are guaranteed to deliver the image quality you demand and the versatile performance you need.



#### **M.ZUIKO DIGITAL ED 12-40mm 1:2.8 PRO 24-80mm (35mm camera equivalent)**

A zoom lens equipped with a dust/splash proof mechanism capable of withstanding heavy professional use. With sharp imaging performance equivalent to single-focus lenses, this lens achieves 1:2.8 brightness throughout the zoom range. ZERO coating technology based on the latest thin film control technology reduces flares and ghosts. For enhanced shooting versatility, this lens is also equipped with a new Manual Focus Clutch mechanism, which enables you to instantly switch to the MF mode by sliding the focus ring towards you, letting you take advantage of manual focus or pan-focus shooting using the distance scale. The closest focusing distance of 20cm throughout the zoom range is also made possible.

- Closest focusing distance: 0.2m
- Filter diameter: ø 62mm
- Dimensions (Max. dia. x Length): ø 69.9 x 84mm
- Weight: 382g
- Protection filter (optional): PRF-D62 PRO
- Lens cap (provided): LC-62D
- Lens hood (provided): LH-66
- Lens case (provided): LSC-0918



#### **M.ZUIKO DIGITAL 40-150mm 1:2.8 PRO 80-300mm (35mm camera equivalent) [Development announced]**

Incorporating the same powerful optical and digital technologies developed for the top-of-the-line M.ZUIKO DIGITAL lenses, M.ZUIKO PRO series lenses are designed to bring the highest level of professional imaging performance to our line of compact Micro Four Thirds system cameras. The second model in this series is a telephoto zoom lens with 35mm camera-equivalent zoom range from 80mm to 300mm. Built tough to stand up to the harsh demands of professional use, this high-grade lens boasts optical performance with 1:2.8 brightness throughout the zoom range and a durable dust-/splash-proof structure. Together with the 12-40mm standard zoom lens, this new lens enables the PRO series to cover the widest possible range of photographic requirements.



**M.ZUIKO DIGITAL ED 12mm 1:2.0 24mm (35mm camera equivalent)**

A high-grade compact and versatile lens featuring a snapshot focusing mechanism for ease-of-use during pan-focus shooting.

---

- Closest focusing distance: 0.2m
- Filter diameter: ø 46mm
- Dimensions (Max. dia. x Length): ø 56 x 43mm
- Weight: 130g
- Protection filter (optional): PRF-D46 PRO
- Lens hood (optional): LH-48<sup>\*1</sup>
- Lens cap (optional): LC-48<sup>\*1</sup>, LC-48B<sup>\*1</sup>



**M.ZUIKO DIGITAL 17mm 1:1.8 34mm (35mm camera equivalent)**

A high-grade snapshot lens manifesting sharp imaging performance from the open aperture at f1.8. Equipped with a snapshot focusing mechanism for easy enjoyment of pan-focus shooting.

---

- Closest focusing distance: 0.25m
- Filter diameter: ø 46mm
- Dimensions (Max. dia. x Length): ø 57.5 x 35.5mm
- Weight: 120g
- Protection filter (optional): PRF-D46 PRO
- Lens hood (optional): LH-48B<sup>\*1+2</sup>
- Lens cap (optional): LC-48<sup>\*1</sup>, LC-48B<sup>\*1</sup>



M.ZUIKO DIGITAL ED 9-18mm 1:4.0-5.6 / 1/640 sec. / 1:8.0



**M.ZUIKO DIGITAL 45mm 1:1.8 90mm (35mm camera equivalent)**

A large-aperture family portrait lens that makes it easy to take advantage of soft defocusing effects, which sets off the faces of your subjects, making them stand out clearly against the background.

---

- Closest focusing distance: 0.5m
- Filter diameter: ø 37mm
- Dimensions (Max. dia. x Length): ø 56 x 46mm
- Weight: 116g
- Protection filter (optional): PRF-D37
- Lens hood (optional): LH-40B<sup>\*1+2</sup>
- Decoration ring (optional): DR-40



**M.ZUIKO DIGITAL ED 60mm 1:2.8 Macro 120mm (35mm camera equivalent)**

A 1x macro lens equipped with a dust-/splash-proof mechanism. A focus limit switch enables compatibility with various shooting styles and distances, from macro to tele.

---

- Closest focusing distance: 0.19m
- Filter diameter: ø 46mm
- Dimensions (Max. dia. x Length): ø 56 x 82mm
- Weight: 185g
- Protection filter (optional): PRF-D46 PRO
- Lens hood (optional): LH-49



**M.ZUIKO DIGITAL ED 75mm 1:1.8 150mm (35mm camera equivalent)**

High-grade portrait lens featuring beautiful defocusing effects. Manifests clear imaging performance in studio photography, as well as taking pictures at the theatre or indoor sports.

---

- Closest focusing distance: 0.84m
- Filter diameter: ø 58mm
- Dimensions (Max. dia. x Length): ø 64 x 69mm
- Weight: 305g
- Protection filter (optional): PRF-D58 PRO
- Lens hood (optional): LH-61F<sup>\*1</sup>
- Lens cap (optional): LC-61<sup>\*1</sup>



**M.ZUIKO DIGITAL 17mm 1:2.8 34mm (35mm camera equivalent)**

A wide-angle pancake lens with high portability thanks to a thickness of only 22mm. The camera remains highly portable even when this lens is mounted so the combination is optimum for daily snapshot shooting.

---

- Closest focusing distance: 0.2m
- Filter diameter: ø 37mm
- Dimensions (Max. dia. x Length): ø 57 x 22mm
- Weight: 71g
- Protection filter (optional): PRF-D37



**M.ZUIKO DIGITAL ED 12-50mm 1:3.5-6.3 EZ 24-100mm (35mm camera equivalent)**

A 4.2x standard movie zoom lens incorporating a motorised zoom mechanism. Manual zooming can be used and macro mode is available for shooting at a magnification of 0.36x (equivalent to 0.72x on the 35mm camera).

---

- Closest focusing distance: 0.35m (normal mode), 0.2m (macro mode)
- Filter diameter: ø 52mm
- Dimensions (Max. dia. x Length): ø 57 x 83mm
- Weight: 212g
- Protection filter (optional): PRF-D52 PRO
- Lens hood (optional): LH-55B (square), LH-55C (flower shaped)



**M.ZUIKO DIGITAL ED 14-150mm 1:4.0-5.6 28-300mm (35mm camera equivalent)**

A 10.7x standard zoom lens ideal for a wide range of scenes. The slim design and light 260g weight make this lens an excellent choice when traveling. The closest focusing distance is as short as 0.5 metres throughout the zoom range.

---

- Closest focusing distance: 0.84m
- Filter diameter: ø 58mm
- Dimensions (Max. dia. x Length): ø 64 x 69mm
- Weight: 305g
- Protection filter (optional): PRF-D58 PRO
- Lens hood (optional): LH-61F<sup>\*1</sup>
- Lens cap (optional): LC-61<sup>\*1</sup>



**M.ZUIKO DIGITAL ED 75-300mm 1:4.8-6.7 150-600mm (35mm camera equivalent)**

Super-telephoto zoom lens with a compact, lightweight design to facilitate handheld super telephoto shooting. The ZERO coating ensures high resistance to unfavourable lighting conditions such as backlight.

---

- Closest focusing distance: 0.9m (focal length 75mm) / 1.5m (focal length other than 75mm)
- Filter diameter: ø 58mm
- Dimensions (Max. dia. x Length): ø 69 x 116.5mm
- Weight: 423g
- Protection filter (optional): PRF-D58 PRO
- Lens hood (optional): LH-61E



**M.ZUIKO DIGITAL ED 9-18mm 1:4.0-5.6 18-36mm (35mm camera equivalent)**

Astonishingly compact, lightweight super wide-angle zoom lens with an overall length of 49.5mm and weight of 155g. The super wide-angle of view facilitates shooting of broad landscapes, as well as portraits.

---

- Closest focusing distance: 0.25m
- Filter diameter: ø 52mm
- Dimensions (Max. dia. x Length): ø 56.5 x 49.5mm (when retracted)
- Weight: 155g
- Protection filter (optional): PRF-D52 PRO
- Lens hood (optional): LH-55B



**M.ZUIKO DIGITAL 14-42mm 1:3.5-5.6 IIR 28-84mm (35mm camera equivalent)**

A high-performance 3x standard zoom lens with a compact, stylish design. Useful in a broad range of scenes including street shooting, portraits and movie shooting.

---

- Closest focusing distance: 0.25m (focal length 14-19mm) / 0.3 m (focal length 20-42mm)
- Filter diameter: ø 37mm
- Dimensions (Max. dia. x Length): ø 56.5 x 50mm (when retracted)
- Weight: 113g
- Protection filter (optional): PRF-D37
- Lens hood (optional): LH-40
- Decoration ring (optional): DR-40



**M.ZUIKO DIGITAL ED 40-150mm 1:4.0-5.6 R 80-300mm (35mm camera equivalent)**

Telephoto zoom range featuring beautiful background defocusing. With a light weight of 190g, this lens ensures the flexibility you need to capture powerful shots from various angles.

---

- Closest focusing distance: 0.9m
- Filter diameter: ø 58mm
- Dimensions (Max. dia. x Length): ø 63.5 x 83mm
- Weight: 190g
- Protection filter (optional): PRF-D58 PRO
- Lens hood (optional): LH-61D

Lens Hoods
LH-48 <sup>*1+2</sup> ; For ED 12mm 1:2.0
LH-48B <sup>*2</sup> ; For 17mm 1:1.8
LH-48B BLK <sup>*1+2</sup> ; For 17mm 1:1.8
LH-40; For 14-42mm 1:3.5-5.6 IIR
LH-40B; For 45mm 1:1.8
LH-40B BLK; For 45mm 1:1.8
LH-49; For ED 60mm 1:2.8 Macro
LH-55B; For ED 9-18mm 1:4.0-5.6 / ED 12-50mm 1:3.5-6.3 EZ
LH-55C; For ED 12-50mm 1:3.5-6.3 EZ
LH-61C; For ED 14-150mm 1:4.0-5.6
LH-61D; For ED 40-150mm 1:4.0-5.6 R
LH-61E; For ED 75-300mm 1:4.8-6.7 II
LH-61F <sup>*2</sup> ; For ED 75mm 1:1.8
LH-61F BLK <sup>*2</sup> ; For 75mm 1:1.8
LH-66; For ED 12-40mm 1:2.8

Protection Filters
PRF-D37; For 14-42mm 1:3.5-5.6 IIR / 17mm 1:2.8 / 45mm 1:1.8
PRF-D46 PRO; For ED 12mm 1:2.0 / 17mm 1:1.8 / ED 60mm 1:2.8 Macro
PRF-D52 PRO; For ED 9-18mm 1:4.0-5.6 / ED 12-50 1:3.5-6.3 EZ
PRF-D58 PRO; For ED 14-150mm 1:4.0-5.6 / ED 40-150mm 1:4.0-5.6 R / ED 75-300mm 1:4.8-6.7 II / ED 75mm 1:1.8
PRF-D62 PRO; For ED 12-40mm 1:2.8



**ZUIKO DIGITAL ED 150mm 1:2.0 300mm (35mm camera equivalent)**  
A Super ED (Extra-low Dispersion) lens element and an ED lens component virtually eliminate the axial colour aberrations that tend to be produced with telephoto lenses.

- Closest focusing distance: 1.4m
- Filter diameter: ø 82mm
- Dimensions (Max. dia. x Length): ø 100 x 150mm
- Weight: 1,465 g (excluding the tripod mount which weighs 145 g)
- Lens hood (provided): LH-89
- Lens case (provided): LSH-1220



**ZUIKO DIGITAL ED 300mm 1:2.8 600mm (35mm camera equivalent)**  
A large-aperture super-telephoto lens with highest-level imaging performance capable of almost completely eliminating colour blur. Each lens is manufactured carefully to order.

- Closest focusing distance: 2.4m
- Filter diameter: ø 43mm\*
- Dimensions (Max. dia. x Length): ø 127 x 285mm
- Weight: 3,290g
- Lens hood (provided): LH-120
- Lens case (provided): LSH-1738



**ZUIKO DIGITAL ED 7-14mm 1:4.0 14-28mm (35mm camera equivalent)**  
Super wide-angle lens featuring high image quality and extraordinary perspective. A double-sided spherical lens element with large aperture provides near-perfect correction of distortions.

- Closest focusing distance: 0.25m
- Filter diameter: -
- Dimensions (Max. dia. x Length): ø 86.5 x 119.5mm
- Weight: 780g
- Lens hood: Built into the lens body
- Lens case (provided): LSC-1022



**ZUIKO DIGITAL ED 14-35mm 1:2.0 SWD 28-70mm (35mm camera equivalent)**  
A large-aperture standard zoom lens featuring high imaging performance at 1:2.0 throughout the zoom range. This lens incorporates a mechanically interlocked manual focusing mechanism.

- Closest focusing distance: 0.35m
- Filter diameter: ø 77mm
- Dimensions (Max. dia. x Length): ø 86 x 123mm
- Weight: 900g
- Lens hood (provided): LH-82B
- Lens case (provided): LSC-1122



**ZUIKO DIGITAL ED 35-100mm 1:2.0 70-200mm (35mm camera equivalent)**  
Ideal for a wide range of applications. Take advantage of the depth of field at the open value for nature and portrait photography, while utilising the high-speed shutter for indoor sports photography.

- Closest focusing distance: 1.4m
- Filter diameter: ø 77mm
- Dimensions (Max. dia. x Length): ø 96.5 x 213.5mm
- Weight: 1,650g (excluding the tripod mount which weighs 150g)
- Lens hood (provided): LH-82
- Lens case (provided): LSH-1236



**ZUIKO DIGITAL ED 90-250mm 1:2.8 180-500mm (35mm camera equivalent)**  
With 1:2.8 brightness throughout the entire zoom range, uncompromised, clear imaging performance is possible. The full power of this lens manifests in restricted shooting conditions such as nature or indoor sports photography.

- Closest focusing distance: 2.5m
- Filter diameter: ø 105mm
- Dimensions (Max. dia. x Length): ø 124 x 276mm
- Weight: 3,270g (excluding the tripod mount which weighs 150g)
- Lens hood (provided): LH-120B
- Lens case (provided): LSH-1738



**ZUIKO DIGITAL ED 8mm 1:3.5 Fisheye 16mm (35mm camera equivalent)**  
The 180° diagonal angle of view and the super close-up capability of 2cm from the lens front let you take advantage of the deformation effect offered by the fisheye lens.

- Closest focusing distance: 0.135m
- Filter diameter: -
- Dimensions (Max. dia. x Length): ø 79 x 77mm
- Weight: 485g
- Lens hood (Built into the lens body)
- Lens case (provided): LSC-0814



**ZUIKO DIGITAL ED 50mm 1:2.0 Macro 100mm (35mm camera equivalent)**  
Completely eliminating colour aberrations using an ED lens, this lens features 1:2.0 brightness that makes it suitable for a wide range of applications from macro to landscape shooting.

- Closest focusing distance: 0.24m
- Filter diameter: ø 52mm
- Dimensions (Max. dia. x Length): ø 71 x 61.5mm
- Weight: 300g
- Lens hood (provided): LH-55
- Lens case (provided): LSC-0814



**ZUIKO DIGITAL 11-22mm 1:2.8-3.5 22-44mm (35mm camera equivalent)**  
A high-performance wide-angle zoom lens with a wide range of applicability, for example capturing the vivid feeling of being amidst the vastness of nature or making it possible to fully capture your subject in a room with insufficient depth.

- Closest focusing distance: 0.28m
- Filter diameter: ø 72mm
- Dimensions (Max. dia. x Length): ø 75 x 92.5mm
- Weight: 485g
- Lens hood (provided): LH-75
- Lens case (provided): LSC-0918



**ZUIKO DIGITAL ED 12-60mm 1:2.8-4.0 24-120mm (35mm camera equivalent)**  
This lens uses special optical glass elements to correct various types of aberrations and ensures high-definition imaging performance with clear, crisp images from edge to edge.

- Closest focusing distance: 0.25m
- Filter diameter: ø 72mm
- Dimensions (Max. dia. x Length): ø 79.5 x 98.5mm
- Weight: 575g
- Lens hood (provided): LH-75B
- Lens case (provided): LSC-0918



**ZUIKO DIGITAL 14-54mm 1:2.8-3.5 II 28-108mm (35mm camera equivalent)**  
The new circular aperture diaphragm ensures soft, natural defocusing. A high-performance lens equipped with a dust-/splash-proof mechanism and excellent close-up shooting capabilities.

- Closest focusing distance: 0.22m
- Filter diameter: ø 67mm
- Dimensions (Max. dia. x Length): ø 74.5 x 88.5mm
- Weight: 440g
- Lens hood (provided): LH-70D
- Lens case (provided): LSC-0918



**ZUIKO DIGITAL ED 50-200mm 1:2.8-3.5 SWD 100-400mm (35mm camera equivalent)**  
ED lens elements are used to correct colour blurring. High-definition imaging performance ensures clear, crisp images from edge to edge and also provides superb close-up shooting capability.

- Closest focusing distance: 1.2m
- Filter diameter: ø 67mm
- Dimensions (Max. dia. x Length): ø 86.5 x 157mm
- Weight: 995g (excluding the tripod mount which weighs 158g)
- Lens hood (provided): LH-70C
- Lens case (provided): LSH-1220



**ZUIKO DIGITAL 25mm 1:2.8 50mm (35mm camera equivalent)**  
Near-natural image angle very close to that of the naked eye and clear imaging performance with the 3D feeling proper to a single-focus lens make this lens suitable for both daily snapshots and more sophisticated portrait and landscape shooting.

- Closest focusing distance: 0.2m
- Filter diameter: ø 43mm
- Dimensions (Max. dia. x Length): ø 64 x 23.5mm
- Weight: 95g



**ZUIKO DIGITAL 35mm 1:3.5 Macro 70mm (35mm camera equivalent)**  
Ultra lightweight macro lens of 165g\*. You can take this compact lens everywhere, and take close-up pictures of tiny subjects such as flowers and insects. It also makes an excellent standard lens for landscape, snapshot and portrait photography.

- Closest focusing distance: 0.146m
- Filter diameter: ø 52mm
- Dimensions (Max. dia. x Length): ø 71 x 53mm
- Weight: 165g



**ZUIKO DIGITAL ED 9-18mm 1:4.0-5.6 18-36mm (35mm camera equivalent)**  
This super wide-angle zoom lens uses ED and DSA (Dual Super Aspherical) lens elements to enable handheld shooting of night-scapes without a tripod.

- Closest focusing distance: 0.25m
- Filter diameter: ø 72mm
- Dimensions (Max. dia. x Length): ø 79.5 x 73mm
- Weight: 275g
- Lens hood (provided): LH-75C



**ZUIKO DIGITAL ED 14-42mm 1:3.5-5.6 28-84mm (35mm camera equivalent)**  
An ED and two aspherical lens elements correct aberrations while another big advantage of this lens, the circular aperture diaphragm, enables beautiful defocusing.

- Closest focusing distance: 0.25m
- Filter diameter: ø 58mm
- Dimensions (Max. dia. x Length): ø 65.5 x 61mm
- Weight: 190g
- Lens hood (provided): LH-61C



**ZUIKO DIGITAL ED 18-180mm 1:3.5-6.3 36-360mm (35mm camera equivalent)**  
A high-power zoom lens suitable for the full range from wide-angle to telephoto. Close-up shooting is possible at a closest focusing distance of 45mm.

- Closest focusing distance: 0.45m
- Filter diameter: ø 62mm
- Dimensions (Max. dia. x Length): ø 78 x 84.5mm
- Weight: 435g
- Lens hood (provided): LH-65



**ZUIKO DIGITAL ED 40-150mm 1:4.0-5.6 80-300mm (35mm camera equivalent)**  
With ED lens elements for optimized image quality and a circular aperture diaphragm for beautiful defocusing, this lens assures high picture quality throughout the zoom range.

- Closest focusing distance: 0.9m
- Filter diameter: ø 58mm
- Dimensions (Max. dia. x Length): ø 65.5 x 72mm
- Weight: 220g
- Lens hood (provided): LH-61D



**ZUIKO DIGITAL ED 70-300mm 1:4.0-5.6 140-600mm (35mm camera equivalent)**  
A super-telephoto zoom lens capable of handheld super-telephoto shooting equivalent to 600mm. 1x magnification (35mm equivalent) tele-macro photography is also available.

- Closest focusing distance: 0.96m (MF) / 1.2m (AF)
- Filter diameter: ø 58mm
- Dimensions (Max. dia. x Length): ø 80 x 127.5mm
- Weight: 615g
- Lens hood (provided): LH-61E



**Four Thirds Adapter MMF-3**  
Dust-/splash-proof lens mount adapter for Four Thirds System lenses. Any Four Thirds System can be used with AF control.

- Dimensions (Max. dia. x Length): ø 65 x 19.5mm
- Weight: 42g

ZUIKO DIGITAL ED 300mm 1:2.8 1/3200 sec, 1:2.8





**Electronic Flash  
FL-600R**

High-intensity flash featuring a drastically decreased charging time compared to previous models. Intuitive menu control is possible using a cross-cursor key and control dial. An LED is provided to support movie shooting. Compatible with bounce shooting and wireless flashing.

- Guide number: 36 (ISO100-m)/50 (ISO200-m)
- AA (R6) battery x 4
- Bounce shooting capability



**Grip Strap  
GS-5**

Grip strap for use with the HLD-7 Power Battery Holder. After attaching, wrap the strap around the top of hand to improve camera holding. Can also be used in combination with a shoulder strap.



**Quilted Cushion Case  
CS-43**

A compact, soft quilted cotton case that can accommodate the camera and lenses. Convenient inner partitions are provided to house multiple articles. The case can easily be used within a larger bag for added protection of camera and lenses, it can also be rolled up when not in use for easy storage.



**Electronic Flash  
FL-300R**

A compact flash that makes it easy to create images with a 3D feeling. Compatible with bounce shooting and wireless flashing.

- Guide number: 20 (ISO100-m)/28 (ISO200-m)
- AAA (R03) battery x 2
- Bounce shooting capability



**Remote Cable  
RM-UC1**

Remote cable compatible with a multi USB connector. The bulb lock function keeps the shutter open for long-term exposure.



**Power Battery Holder  
HLD-7**

Dust-/splash-proof battery holder equipped with two Fn buttons and a dial. The vertical position shutter button ensures high operability even when shooting in a vertical posture. Accommodates one lithium-ion rechargeable battery\*1 which, when used alternately with the rechargeable battery in the camera, enables recording for long periods.

- Guide number: 36 (ISO100-m)/50 (ISO200-m)
- AA (R6) battery x 4
- Bounce shooting capability



**OM-D Wrapping Case**

True to its name, this high-grade nylon jacket wraps around your OM-D and its lens like a second skin – for ultra-compact protection when you carry your equipment in another bag. Sturdy and stylish, the Wrapping Case has space for a variety of M.ZUIKO DIGITAL lenses.



**System Camera Bag  
CBG-10**

This stylish, multi-functional camera bag accommodates the camera body plus two Four Thirds lenses, and can be expanded to provide even more storage by attaching up to two CS-42SF Sub Cases (separately available). The CBG-10 also uniquely features a genuine Micro Four Thirds lens mount, as used on the E-M1, as an emblem on the front.



**Large Eyecup  
EP-13**

The eyecup improves the visibility of the viewfinder screen by shutting out solar light. The elastic material fits comfortably over the eye whether the eye is naked or eyeglasses are worn. When the eyecup is used, camera stability is improved thanks to support at three points: the eye area and both hands.



**Soft Camera Case  
CS-42SF**

Full-cover soft case designed specifically to accommodate the E-M1 camera together with a lens. Can also be attached to the CBG-10 System Camera Bag.



**Shoulder Strap  
CSS-P118**

Slim and comfortable to wear shoulder strap bearing the OM-D logo. The washable material\*\*2 makes the strap usable in severe environments without the worry of staining caused by sweat or dirt.



**Genuine Leather Shoulder Strap  
CSS-S109LLII**

A genuine leather shoulder strap that can also be hung from the shoulder across the chest. The extra long design enables length adjustment for added versatility.



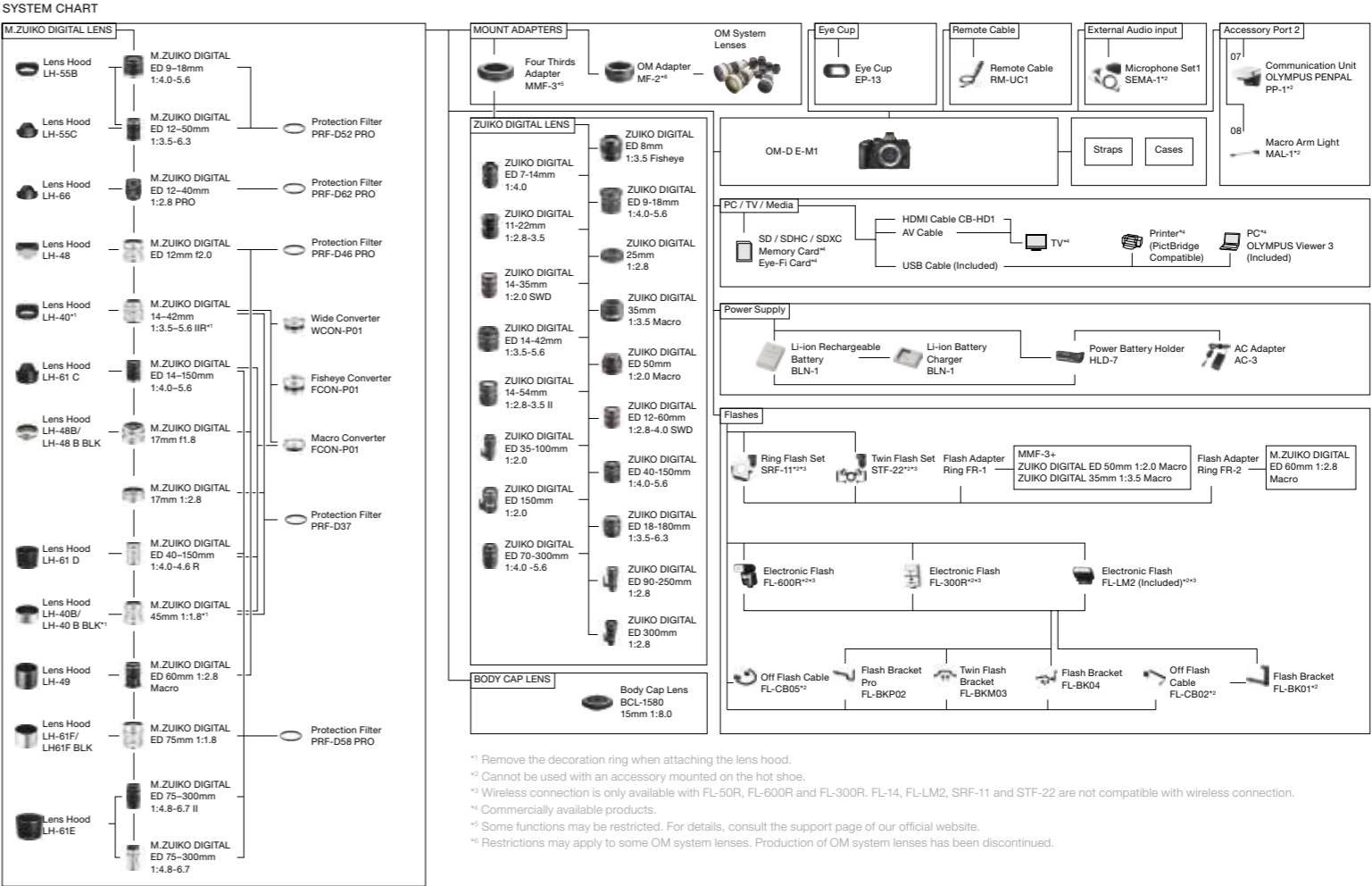
**OM-D Shoulder Bag M and L**

The lightweight OM-D Shoulder Bags with their classic design are made of high-grade nylon for the secure storage and transportation of Olympus OM-D cameras.



**Underwater Case  
PT-EP11**

Exclusively designed for the E-M1, this underwater case provides water pressure resistance up to a depth of 45 metres, allowing you to take full advantage of the E-M1's high image quality in the underwater world.



## SERVICE PLUS

A SPECIAL CAMERA DESERVES  
SPECIAL CARE & ATTENTION

Join Service Plus to enjoy special benefits  
and extra warranty for free.

### DESIGNATED HOTLINE

Call your personal E-M1 specialists

### PERSONAL PICK-UP SERVICE

The most convenient transportation for your E-M1

### FAST-LANE REPAIR

Have your product returned to you extra-fast

### 6 MONTHS EXTRA WARRANTY

We strongly believe in the longevity of our products

More details and how to join Service Plus at:  
[olympus-europa.com/serviceplus](http://olympus-europa.com/serviceplus)



\*The Olympus ServicePlus is only available in selected countries.



OM-D-E-M1 Specifications

Product Type	Product type / Memory	Micro Four Thirds interchangeable lens system camera / SD Memory Card** (SDHC, SDXC, UHS-I compatible, Eye-Fi Card compatible*)
	Screen size / Lens mount	*1: Class 6 or higher is recommended for Movie shooting. *2: Not compatible with Endless Mode.
Image Pickup	Product type / Number of pixels / Aspect ratio	4/3 Live MOS Sensor / Number of effective pixels: Approx. 16.3 million pixels, Total number of pixels: Approx. 16.8 million pixels / 1.33 (4:3)
	Dust reduction	Supersonic Wave Filter (dust reduction system for image sensor)
Recording (Still)	Recording format	DCF, DPOF compatible / Exif, PRINT Image Matching II, MPO compatible
	File format	RAW (12-bit lossless compression), JPEG, RAW+JPEG, MPO (3D still)
	Recording image size	[RAW] 4608 x 3456 pixels, [JPEG] 4608 x 3456 pixels – 640 x 480 pixels
	File Size	RAW: 4608 (H) x 3456 (V) (approx. 1/1.5 lossless compressed) Approx. 17 MB, Set1 (L/F): 4608 (H) x 3456 (V) (1/4 compressed) Approx. 7.5 MB, Set2 (L/N): 4608 (H) x 3456 (V) (1/8 compressed) Approx. 3.5 MB, Set3 (M/N): 2560 (H) x 1920 (V) (1/8 compressed) Approx. 1.1 MB, Set4 (S/N): 1280 (H) x 980 (V) (1/8 compressed) Approx. 0.4MB
Image Stabilisation	Type	Built-in (Image sensor shift type for movie & still, 5-axis* image stabilisation) * Yaw / pitch / vertical shift / horizontal shift / rolling
	Mode	4 modes (S-I.S.AUTO, S-I.S.1, S-I.S.2, S-I.S.3), OFF
	IS for viewfinder image	Available (by half-pressing the shutter button or enlarging operation)
	Focal length setting / Lens IS priority	Available / Available
Viewfinder	Stabilisation performance	4 EV steps* (with M.ZUIKO DIGITAL ED 12–50mm f3.5–6.3 EZ, focal length: 50mm (equivalent to 100mm on 35mm camera)) * Based on CIPA measurement conditions.
	Type	Eye-level electronic viewfinder, approx. 2.36M-dot (optional VF-2/VF-3/VF4 electronic viewfinder mountable)
	Field of view / Viewfinder magnification	Approx. 100% / Approx. 1.30x** – approx. 1.48x** (1-m-1, 50mm lens, infinity) *1: at Finder Style 1, 2 (aspect 4:3) *2: at Finder Style 3 (aspect 4:3)
	Eye point / Diopter adjustment range	Approx. 21mm (1-m-1, distance from near lens surface) / +4 – +2m*
Live View	Preview	Available with Live Preview function button
	Level Gauge	2-axis level gauge: horizontal/vertical (1-axis level gauge available with half-pressing shutter release button (Finder Style 1, 2))
	Finder Style	Selectable from 3 types
	Brightness / Colour temperature control / Eyecup	Available / Available / Optional eyecup EP-13 is available.
Monitor	Live view	Approx. 100% field of view, Exposure compensation preview, WB adjustment preview, Gradation auto preview, Face detection preview (up to 8 faces), Grid line, Histogram, Magnification display (x5/x7/x10/x14), Normal, Highlight & Shadow, Level Gauge, Off
	Monitor type	3.0-inch tilting wide monitor** Approx. 1037k-dots, Touch control in electrostatic capacitance type
	Touch control	Touch Shutter release, Touch enlargement, Touch Live Guide, AF area selection*, AF area enlargement, Frame advance/backward, Enlargement playback, Touch Super Control Panel, Touch Art Filter selection, Wi-Fi connection
	Tilting angle	Upward tilting angle: up to 80 degrees, Downward tilting angle: up to 50 degrees
Focusing	Brightness control / Colour temperature control	±7 levels / ±7 levels
	Colour tone select	Vivid, Natural
	AF system	High-speed imager AF (Contrast detection/Phase-difference detection)*
	Focus mode	* Phase-difference detection AF when Four Thirds lens is mounted with optional mount adapter Single AF (S-AF), Continuous AF (C-AF), Manual Focus (MF), (S-AF + MF, AF tracking (C-AF + TR))
Exposure Control (Still)	Full-time AF	* Works as MF mode during movie recording when Four Thirds lens is mounted. Available** * Not available when Four Thirds lens is mounted.
	Magnified frame AF / Magnified AF	Selectable from over 800 AF points. Enlarged view check by magnify button (available with old lenses**), Magnification x5, x7, x10 (Default), x14 selectable ** Old lenses without data communication / Super spot AF, Focusing possible in approx.
	Face detection AF / Eye detection AF	0.16 – 0.02% of image screen** Only when Micro Four Thirds lens is mounted. Available / Available*, Eye Detection AF mode: Off, Neearer-eye priority, Right-eye priority, Left-eye priority * Face (eye) detection AF is not available when the face is detected in the area out of phase-difference detection AF area with Four Thirds lens is mounted.
	Focusing point / Focusing point selection mode	Available / Available*, Eye Detection AF mode: Off, Neearer-eye priority, Right-eye priority, Left-eye priority * Face (eye) detection AF is not available when the face is detected in the area out of phase-difference detection AF area with Four Thirds lens is mounted.
Exposure Control (Still)	AF illuminator	Available
	Manual focus assist*	Live view image is magnified when the focus ring is rotated, (at S-AF+MF or MF mode) * Customize function
	Peaking function	Available (White edge type, Black edge type) Peaking indication is displayed by the customize function (Fn button, etc.) or by rotating the control ring.
	Metering system (TTL Image sensor metering)	Digital ESP metering (324-area multi pattern metering), Center weighted average metering, Spot metering, Spot metering with highlight control, Spot metering with shadow control
Shutter	Metering range	EV -2 - 20* (at normal temperature, 17mm f2.8, ISO 100) * At Standard frame rate, EV 0-20 at High-speed mode.
	Exposure compensation / AE lock	iAuto, P, Program AE (Program shift can be performed), A: Aperture priority AE, S: Shutter priority AE, M: Manual, Bulb, Time, Scene select AE, Art Filter, Underwater wide/macro** My set** *2
	Shutter type	Computerized focal-plane shutter
	Shutter speed	1/8000 - 60 sec. (1/3, 1/2, or 1EV steps selectable), Bulb/Time: default setting 8min. (1/2/4/8/15/20/25/30 min. selectable)
Flash	Flash intensity control method	TTL Auto, Auto*, Manual, super FP* (FP-TTL AUTO, FP-MANUAL) * Available on the external flash
	Bundled flash*	TTL flash, GN=7 (ISO100 - m) / GN=10 (ISO200 - m) * Attach it on the hot shoe and connect it to the accessory port 2. Available on FL-LM1/2.
	Flash mode	Flash Auto, Redeye, Fill-in, Flash Off, Red-eye Slow sync.(1st curtain), Slow sync. (1st curtain), Slow sync. (2nd curtain), Manual (1/1 FULL – 1/64)
	Synchronization speed	1/320 sec. or less** It depends on flash models or flash mode FL-LM1/2: 1/320 sec., Other: 1/250 sec., Super FP: 1/125–1/8000 sec.
Wireless Flash Control	Flash intensity control / Compatible external flash	Up to ±3 EV in 0.3, 0.5, 1 EV steps selectable / FL-50R, FL-36R, FL-20, FL-14, FL-300R, FL-600R
	Compatible external flash	FL-50R, FL-36R, FL-300R, FL-600R
	Control method	Triggered and controlled by built-in flash (FL-LM2) ** Available on FL-LM1/FL-600R. (Olympus Wireless RC Flash system compatible)
	External Flash Intensity type	TTL Auto, Auto, Manual, FP-TTL AUTO, FP-MANUAL
Flash	Channel / Group No.	4 channels / 4 groups (External flash 3 groups + a bundled flash) * Available on FL-LM1/2 / FL-600R



\* Specifications and appearances are subject to change without any notice or obligation on the part of the manufacturer. \* The colours of products printed herein may differ from those of the actual products. \* Windows is a registered trademark of Microsoft Corporation in the United States and/or other countries. \* Shadow Adjustment Technology functions contain patented technologies from Apical Limited. \* HDMI, the HDMI logo and High-Definition Multimedia Interface are trademarks or registered trademarks of HDMI Licensing LLC. \* Eye-Fi, Eye-Fi logo and Eye-Fi connected are registered trademarks of Eye-Fi, Inc. \* Wi-Fi is a registered trademark of the Wi-Fi Alliance. The Wi-Fi CERTIFIED Logo is a certification mark of the Wi-Fi Alliance. \* Four Thirds and Micro Four Thirds are registered trademarks of Olympus Imaging Corporation. \* ART FILTER is a trademark and/or registered trademark of Olympus Imaging Corporation. \* All other company and product names are registered trademarks and/or trademarks of their respective owners. \* The pictures in this catalog of the monitors are simulated. \* The data herein is as of August 2013.

**OLYMPUS**  
Your Vision, Our Future

OLYMPUS EUROPA SE & Co. KG  
For more detailed specifications: [olympus-europa.com/e-m1](http://olympus-europa.com/e-m1)

Drive	Sequential shooting maximum speed	[Sequential shooting H mode] 10.0 fps* in case of "1.S. OFF" * Focus and exposure are fixed at the values for the first shot. [Sequential shooting L mode] 6.5 fps* in case of "1.S. OFF" * When using the M.ZUIKO DIGITAL ED 12–50mm 1:3.5-6.3 EZ, M.ZUIKO DIGITAL ED 12–40mm 1:2.8 PRO [RAW] Max. 50 frames (in seq. shooting L), Max.41 frames (in seq. shooting H) [JPEG] Max. card full frames (in seq. shooting L).
	Max. recordable pictures on sequential shooting*	Max. 95 frames (in seq. shooting H) * When using the M.ZUIKO DIGITAL ED 12–50mm 1:3.5-6.3 EZ. * With TOSHIBA SDHC UHS-I card based on Olympus in-house measurement conditions.
Bracketing	Self-timer	Operation time: 12 sec., 2 sec., custom (Waiting time 1–30sec., Shooting interval 0.5/1/2/3sec., Number of shots 1–10)
	Wireless remote control	Not Available
Bracketing	Exposure bracketing	2, 3 or 5 frames in 0.3/0.7/1.0 EV steps selectable, 7 frames in 0.3/0.7 EV steps selectable
	ISO bracketing / White balance bracketing / Flash bracketing	3 frames in 0.3/0.7/1.0 EV steps selectable / 3 frames in 2, 4, 6 steps selectable in each A-B/G-M axis. / 3 frames in 0.3/0.7/1.0 EV step selectable
HDR	Art Filter bracketing	i-Enhance, Vivid, Natural, Muted, Portrait, Monotone, Custom, Art Filters selectable.
	HDR (Automatic Overlay)	HDR1, HDR2 * Available in P/A/S/M mode, Take 4 pictures at different exposures composite into a high contrast image.
Art Filter	Bracketing for HDR post-process	3 or 5 frames in 2.0/3.0 EV steps selectable, 7 frames in 2.0 EV step. * HDR picture cannot be made by this function. * HDR function can be called by Fn-button.
	Mode (Variation / Effect)	Pop Art (I, II / a.b.c.d.e), Soft Focus (- / c.e), Pale & Light Colour (I, II / a.b.c.d), Light Tone (- / d), Grainy Film (I, II / b.c.d.f.g), Pin Hole (I, II, III / d.), Diorama (- / d), Cross Process (I, II / b.c.d.), Gentle Sepia (- / a.b.c.d.), Dramatic Tone (I / b.c.d.e) (II / b.c.d.e.f.g), Key Line (I, II / a.b.c.d.e.), Water Colour (I, II / a.c.d.)
Photo Story	Art Effect	a. Soft Focus Effect, b. Pin-Hole Effect, c. White Edge Effect, d. Frame Effect, e. Star Light Effect, f. Defocus Effect (vertical, horizontal), g. B&W Effect (Yellow, Orange, Red, Green), h. Pict. Tone (None, Sepia, Blue, Purple, Green)
	Type	Standard (I, II, III, IV / a. b. c. d.e / A. B. C. D) / Fun Frame (I, II, III / - / -). Speed (- / c / A. E. F)
Recording format	Frame Effect	a. White Frame, b. White Frame & White Edge Effect, c. Black Frame, d. White Frame & Pin Hole Effect
	Aspect & Window/Pattern	A: 4.3, 2 frames, B: 4.3, 3 frames, C: 1.1, 2 frames, D: 1.1, 3 frames, E: 1.1, 4 frames, F: 16.9, 5 frames
Movie Mode	MOV* MPEG-4 AVC(H.264), AVI (Motion JPEG)	[MOV] Full HD: 1920 (H) x 1080 (V), 30p (29.97 fps) Recording, 24 Mbps (Fine) / 16 Mbps (Normal), Aspect 16:9
	Movie Mode	HD: 1280 (H) x 720 (H), 30p (29.97 fps) Recording, 12 Mbps (Fine) / 8 Mbps (Normal), Aspect 16:9 [AVI Motion JPEG] HD: 1280 (H) x 720 (H), 30 fps*, Aspect 16:9, SD: 640 (H) x 480 (H), 30fps*, Aspect 4:3 * Excluding some Art Filters
Movie	Maximum Recording Time	[MOV] Full HD: Approx. 29 min (Normal) / Approx. 22 min (Fine), HD: Approx. 29 min (Normal) / Approx. 29 min (Fine)
	Movie Function	[AVI Motion JPEG] HD: Approx. 7 min*, SD: Approx. 14 min** Excluding some Art Filters Movie Effect*: One-shot echo / Multi-echo / Art fade * Default ON Art Filter Movie, Aperture Priority Movie, Shutter Speed Priority Movie, Manual Shot Movie
Recording (Sound)	IS for Movie	Built-in (Image sensor shift type image stabilisation) M.I.S.ON (multi-motion IS using image sensor shift type image stabiliser), Off
	AE Lock	* Angle of view varies. IS lens priority available.
Recording (Sound)	File size	MOV Format: Max 4GB, Motion-JPEG Format: Max 2GB
	Recording format	Wave Format (Stereo linear PCM / 16-bit, Sampling frequency 48kHz)
White Balance	Microphone/Speaker	Stereo / Mono * External stereo microphones can be attached.
	Microphone function	Wind Noise Reduction*, Recording level adjustment, Audio dubbing possible for still pictures (up to 30 sec.) * Sound quality slightly different from normal recording.
Colour Mode	White balance mode	Auto WB, 7 Preset WBs, 2 Capture WBs, Custom WB (Kelvin setting)
	White balance compensation	±7 steps in each A-B/G-M axis * Except for Custom WB
Picture Mode	Colour Matrix	sRGB, Adobe RGB
	Mode	i-Enhance, Vivid, Natural, Muted, Portrait, Monotone, Custom, e-Portrait, Colour Creator, Art Filters
Interval Mode	Gradation	Auto, Normal, High key, Low key (except Art Filters)
	Interval Shooting	1–999 frames*, Interval time 1 sec.–24 hours, Time-lapse movie available.
Multi Exposure	Number of picture / Functions	2 frames / Auto gain, Exposing on Recorded picture (RAW)
	Aspect Ratio	4:3 (Default) / 3.2 / 16.9 / 1.1 / 3.4
Level Gauge	Detection	2-axis
	One-push Digital Teleconverter	x2
Wi-Fi Function	GPS info. Function	Available (by using Smartphone GPS data)
	Wireless shooting*	Remote Live View, Remote Rec view, Wireless touch AF shutter, Self-timer shutter (with count-down sound), Remote Power off (Auto/P/A/S/M, Live bulb/time available. Setting for control aperture, shutter speed, exposure compensation, ISO sensitivity, White balance, Sequential shooting possible. Up to 1 device can be connected.) * Shooting function by the smartphone.
Playback	Image Share	Images to be transferred to smartphone can be reserved. Up to 4 devices can be connected simultaneously. * File type: JPEG (except MPO), MOV
	Easy connection	Smart & Easy Connection by QR code.
Menu	Playback mode	Single-frame, Information display, Index display (4/9/25/100 frames), Calendar, Enlargement (2x - 14x), Movie (with sound, FF/REW/Pause), Slide show (with sound including BGM, Picture rotation (auto), BGM replace function, Light Box display)
	Information display	Histogram (Independent luminance / RGB available), Highlight / Shadow point warning, AF frame, Photographic information, OFF
Reset & Custom Setting	Languages	34 languages selectable
	My mode	4 settings recordable / Available on allocating to mode dial.
Image Editing	Editing function	RAW development, Gradation auto, Monochrome, Sepia, Red-eye fix, Saturation, Resize (1280x960, 640x480, 320x240), Trimming, Aspect, e-Portrait, Image Overlay, Post-recording
	Print function	Print reservation (DPOF), Direct print (PicBridge compatible)
Input / Output	USB/AV/Remote controller connector	Dedicated multi-connector (USB: USB2.0 H-Speed, Video: NTSC/PAL selectable, Optional Remote cable RM-UC1 compatible)
	HDMI connector	Micro HDMI (Type-D)
Power Requirements	Flash attachment / Accessory port 2	Hot shoe/synchro terminal / Dedicated multi-connector (for VF-2/VF-3/VF-4, SEMA-1, MAL-1 and PP-1.)
	Wireless LAN / Microphone input	Built-in (IEEE 802.11b/g/n) / 3.5mm dia. stereo minijack
Dimensions / Weight	Battery	BLN-1 Li-ion battery (included)
	Power Battery Holder / AC Adapter	Optional H.L.D-7 Power Battery Holder (BLN-1 x 1) / Optional AC-3 AC Adapter** * Can be connected to E-M1 via H.L.D-7 Power Battery Holder.
Operating Environment	Sleep mode	Available (1/3/5min. off)
	Dimensions	130.4mm (W) x 93.5mm (H) x 63.1mm (D) [CIPA guideline compliant, excluding protrusions]
Box Contents	Weight	Approx. 497g [CIPA guideline compliant, with BLN-1 battery and Memory card], Approx. 443 g (body only)
	Temperature / Humidity	-10 - +40°C (operation), -20 - +40°C (storage) / 30 - 90% (operation), 10 - 90% (storage)
Exterior	Box Contents	Body, FL-LM2 Electronic Flash, BLN-1 Li-ion Battery, BCN-1 Li-ion Battery Charger BCN-1, USB Cable, Shoulder Strap, OLYMPUS Viewer 3 (CD-ROM), Instruction Manual, Warranty Card
	Material	Metal

**HDMI**

**Eye-Fi**  
connected

**optical**

**W**  
MICRO  
FOUR  
THIRDS

**Wi-Fi**  
CERTIFIED